

An isometric illustration on a blue background featuring various electronic devices and furniture. In the top left, a laptop is partially visible. To its right is a large, multi-bay electronic device, possibly a server or a large power supply unit. Below the laptop, there are two circular objects resembling CD or DVD discs. In the center, a tall, rectangular, light-colored tower unit stands on a dark base; it has two circular ports on its front face and two USB ports at the bottom. To the right of the tower is another CD/DVD disc. Further right is a long, thin electronic device, possibly a power strip or a long power supply unit. In the bottom left, a laptop is partially visible. In the bottom right, there is another tall, rectangular tower unit, similar to the one in the center, and a portion of a laptop. The overall theme is digital technology and office/home furniture.

Digital

2023

Sockets for Office and Home Furniture

Sockets for Office and Home Furniture

The background is a solid blue color. Overlaid on this are white line drawings. In the upper right, a power strip with three outlets is shown at an angle. In the lower left, a portion of a desk surface is visible with a camera lens assembly. In the lower right, a circular lens element is shown.

Cable and socket management

WIT REA

Introduction.....	04	04 Iris.....	30
00 Cable Management.....	10	05 Source.....	34
01 UnderDesk.....	18	06 SourceCover.....	38
02 DeskUp.....	22	07 PopUp.....	42
03 StandUp.....	26	08 Frame.....	46



H I N C H !

09	SlimFrame	50
10	SlimCover	54
11	FlipUp	58
12	Kompakt	62
13	KompaktS	66

14	WingsPremium	70
15	WingsRosette	74
	Modules	78



Digitel

04

The many electrical devices we use for work and communication bring with them a plethora of cables and the need for a constant or occasional power supply.

Let's sort out the cables, get them out of sight and out of our way while we're working, but still somewhere we can easily reach

them when we need them – under the desk.

You need to get power to multiple small devices whilst putting safety first and ensuring greater workplace efficiency and easier cleaning. The place to do it isn't on the floor or on the desk, it's just under the desk.

Tidy surroundings and good design have a calming effect, reducing stress, improving mood, elevating enthusiasm and freeing up time.

Beautiful design makes us feel good. It helps us to be more efficient. It has a positive impact on our overall quality of life. That's why we always choose beautiful things if we can.

Good design isn't just about being pleasing to the eye, it's also about simplicity, ease of use, safety and efficiency. Of course it has to do

the job it was meant to – to perfection – but it also needs to fit right in with its surroundings.

Design and technological solutions have reached the point where what was once a luxury is today a need and will tomorrow become essential.

Plug sockets can look good.

PopUp
see page 42

DeskUp
see page 22







We need energy when we're working. Getting energy to our devices means cables. Cables cause mess, insecurity and safety issues.



Digital solutions are about organising your workspace – they hide the cables away and put sockets within arm's reach. A well-organised workspace saves time and ensures positive energy.

Cable management

STANDARD

“Spine” is a colloquial term for a cable tidy comprised of “vertebrae” which are stacked one on top of the other and thus resemble a human spine. Instead of protecting bone marrow, ours protects the cables running through it. Cables can be distributed between four channels separated by dividers so that communications cables can be kept apart from power cables.

SPIRAL

The spiral cable management solution is not so spine-like in appearance, but its job is the same and so the name has stuck. The main advantage of the spiral spine is that it can be stretched if needed, up to a length of 140 cm, and so is ideal for adjustable-height desks. It is easy to install – the top is fixed to the desk, the cables are introduced, and it is lowered to the floor.



BENEFITS

Run power and communications cables separately
..

Cables look better hidden

RECOMMENDED FOR:

All types of office

COLOURS:



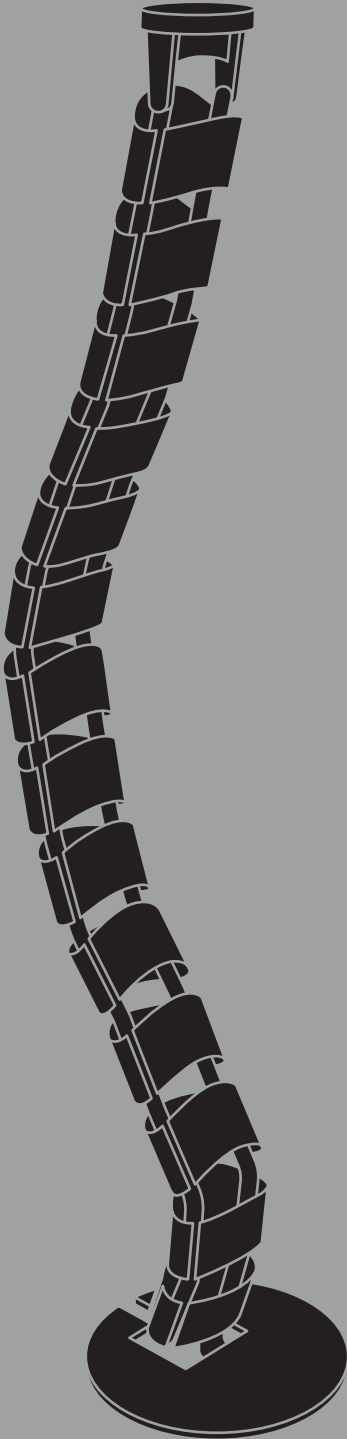
RAL 9010



RAL 9005



RAL 9006



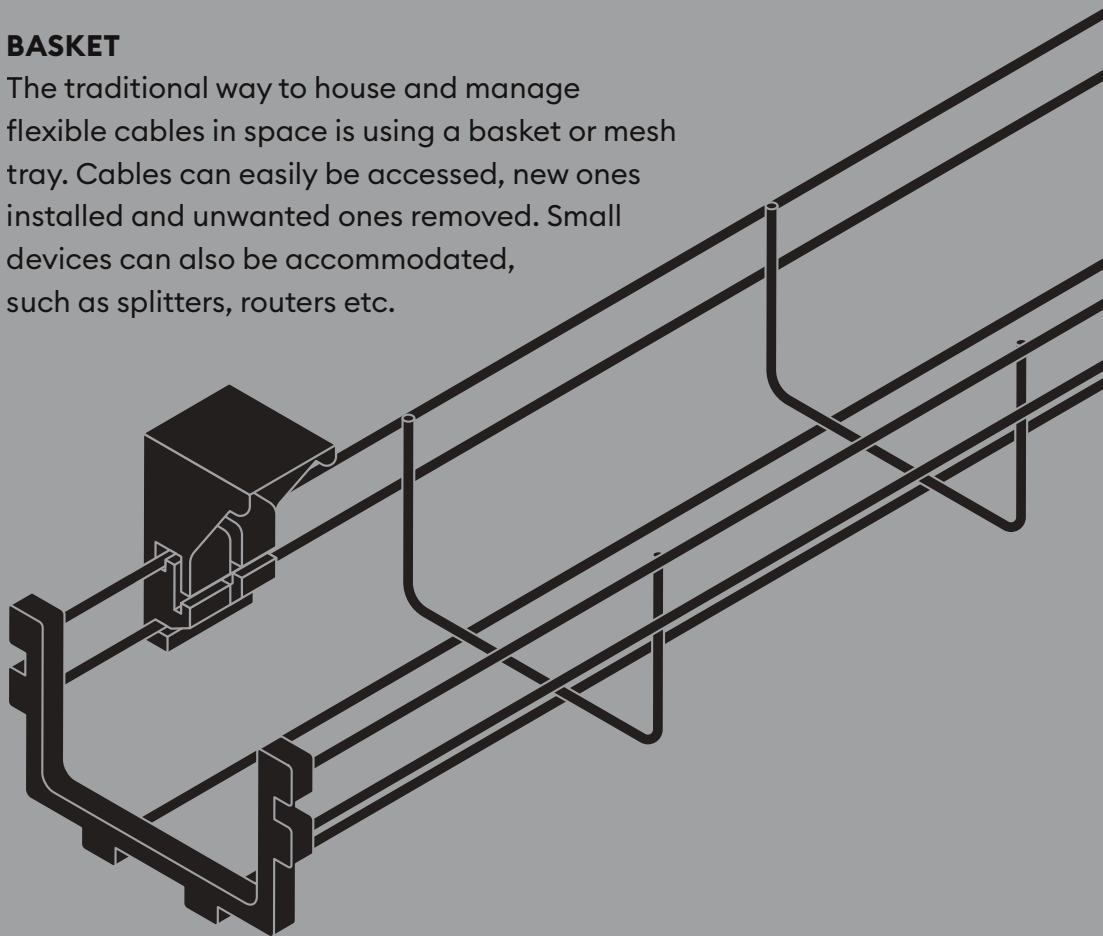




Cable management

BASKET

The traditional way to house and manage flexible cables in space is using a basket or mesh tray. Cables can easily be accessed, new ones installed and unwanted ones removed. Small devices can also be accommodated, such as splitters, routers etc.



BENEFITS

All cables are under the desk top

••

Tidy work surface

••

Available in various lengths

INCLUDED

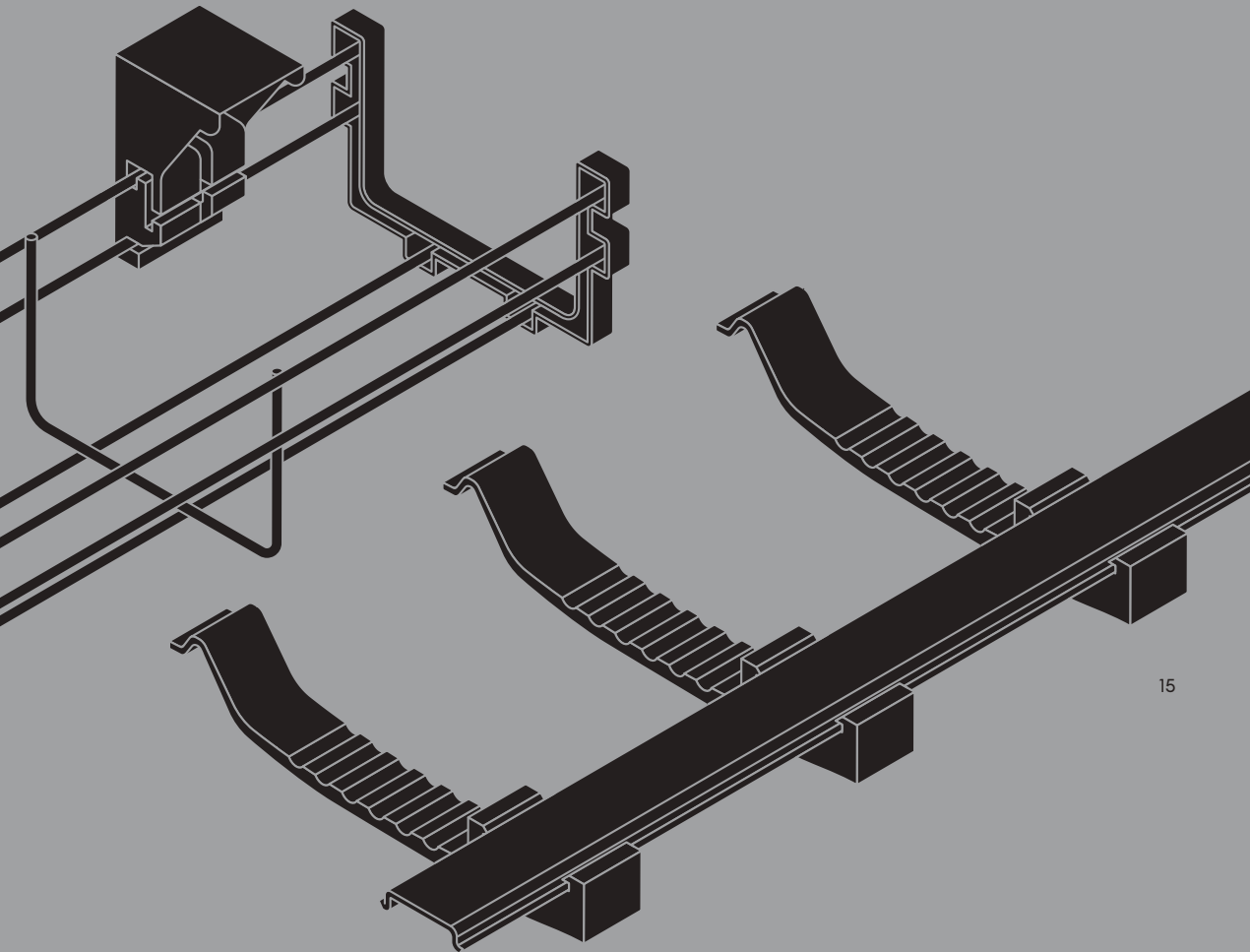
Plastic end pieces

••

Plastic mounts for attachment to horizontal and vertical surfaces

RECOMMENDED FOR:
All types of office

2023



15

CARRY

The best place to stow cables in the office is fixed right up against the underside of the desk. Carry, with its aluminium DIN rail and the plastic sprung cable clips that click onto it, allows just that. The plastic clips can also be mounted without the rail, by screwing them into the underside of the desk, but the rail ensures straight-line routing and also allows for socket strips such as the UnderDesk unit to be mounted on it.



Single clip



Double clip

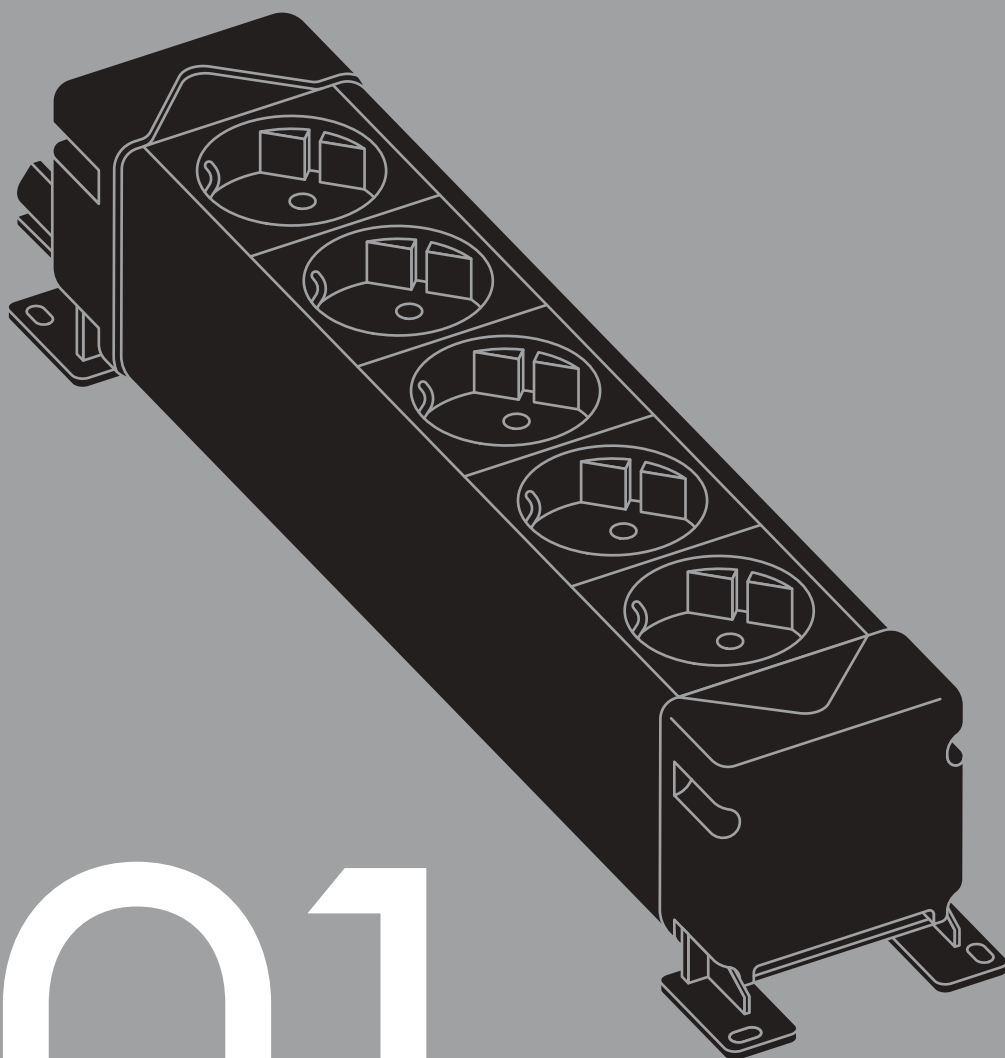
DIGITEL





UnderDesk

Simply ideal



18

01

RECOMMENDED:
Everywhere

UnderDesk can be used as a robust extension cable anywhere you like – free-trailing, in a bay under a shutter in the desk or attached to any surface with screws.

UnderDesk provides additional plug sockets for safe power distribution to multiple smaller devices whilst organising cables, and, in combination with Carry, removing them from the floor.

It can provide additional security through surge protection and a switch.

2-10

MODULES

19

MOST POPULAR CONFIGURATIONS

3P



4P



3P1USBC2



5P



For available communications and power modules see pages 78 and 79

BENEFITS

sockets and cables
stay under the desk

••

can be connected inline
without additional cables

••

multiple mounting methods

PLASTIC ELEMENTS

Black

••

White

MODULES

Black

••

White

ALUMINIUM

Oxide coating,
natural brushed

••

Black

••

White



VOLTAGE
100-250 V max

CURRENT
16 A max

FREQUENCY
50-60 Hz

TEMPERATURE
0 – 40°C

RELATIVE HUMIDITY
0 – 95 % (non-condensing)

PROTECTION
IP 30



2023



21

INSTALLATION

Comes with two different pairs of feet for mounting either on a surface or on the Carry aluminium rail
..

Can be mounted using DeskUp on an aluminium bracket under the table

CABLES

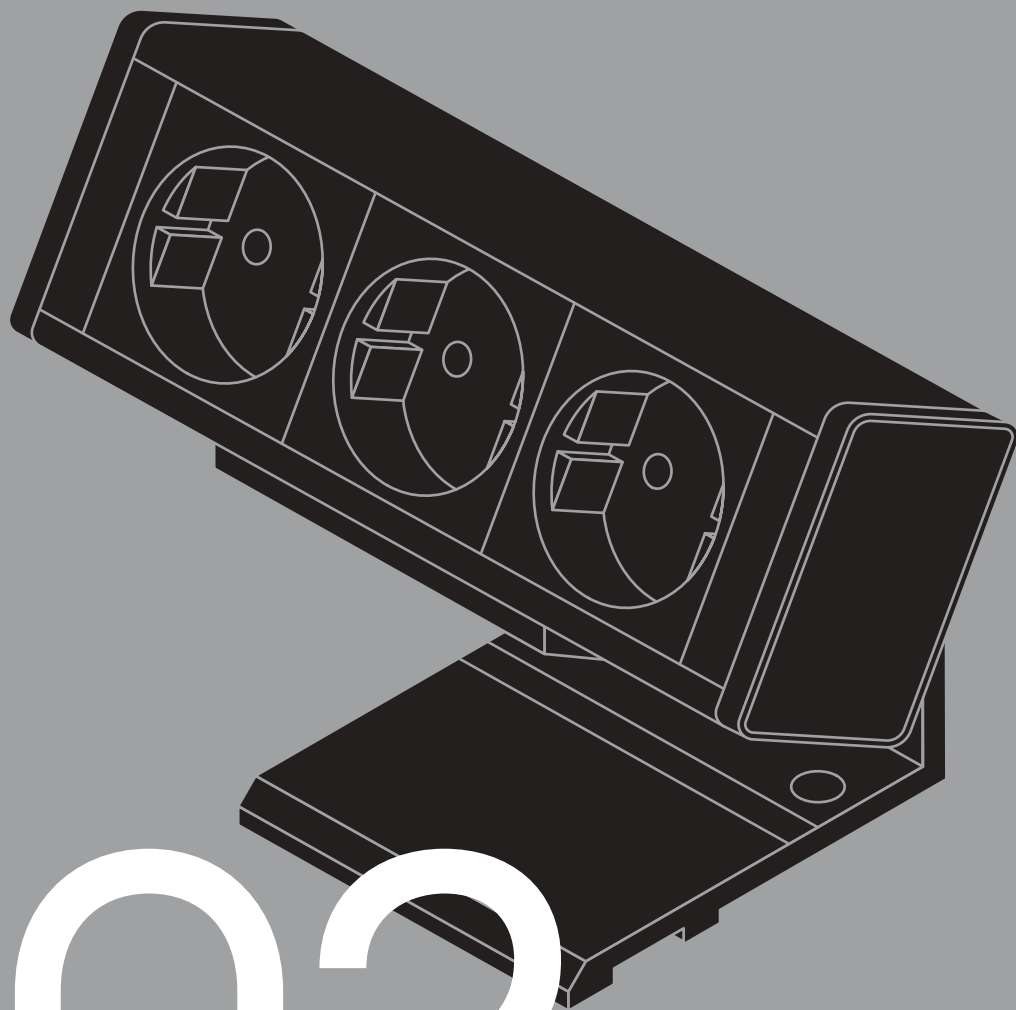
Standard
Integrated EPN3MO connector
..

On request
any length and connector

DIGITEL

DeskUp

No drilling, cutting or making
any openings in the desk



22

02

DeskUp is quick and simple to install and even easier to relocate elsewhere as it does not require any additional tools. It can be adapted to a variety of environments making it ideal for office and home office desks, but especially for situations in which a large number of devices needs to be installed in a short span of time. It is designed to meet the aesthetic demands of the environment, especially in open plan settings.

2-6

MODULES

23

MOST POPULAR CONFIGURATIONS

2PIUSBC2



3PIUSBC2



2PIUSBC2-2RJ45



2PIUSBC2-2RJ45-1USBC1HDMI



For available communications and power modules see pages 78 and 79

BENEFITS

- no holes cut in the desk
-
- fixes to the desk by hand
-
- socket positions angled towards user

SIDE PLATES

Brushed
stainless steel

••

White stainless
steel

••

Black stainless
steel

••

Any RAL colour
on request



PLASTIC ELEMENTS

Black

••

White

MODULES

Black

••

White

ALUMINIUM

Oxide coating,
Sand Brushed

••

Black

••

White





VOLTAGE
100-250 V max

CURRENT
16 A max

FREQUENCY
50-60 Hz

TEMPERATURE
0 – 40°C

RELATIVE HUMIDITY
0 – 95 % (non-condensing)

PROTECTION
IP 40

25

INSTALLATION

Desk-mounted
Easy installation using
aluminium vice

..

Mounts on desk thickness
between 8 and 38mm

CABLES

Standard
Integrated 20 cm cable
with EPN3MO connector

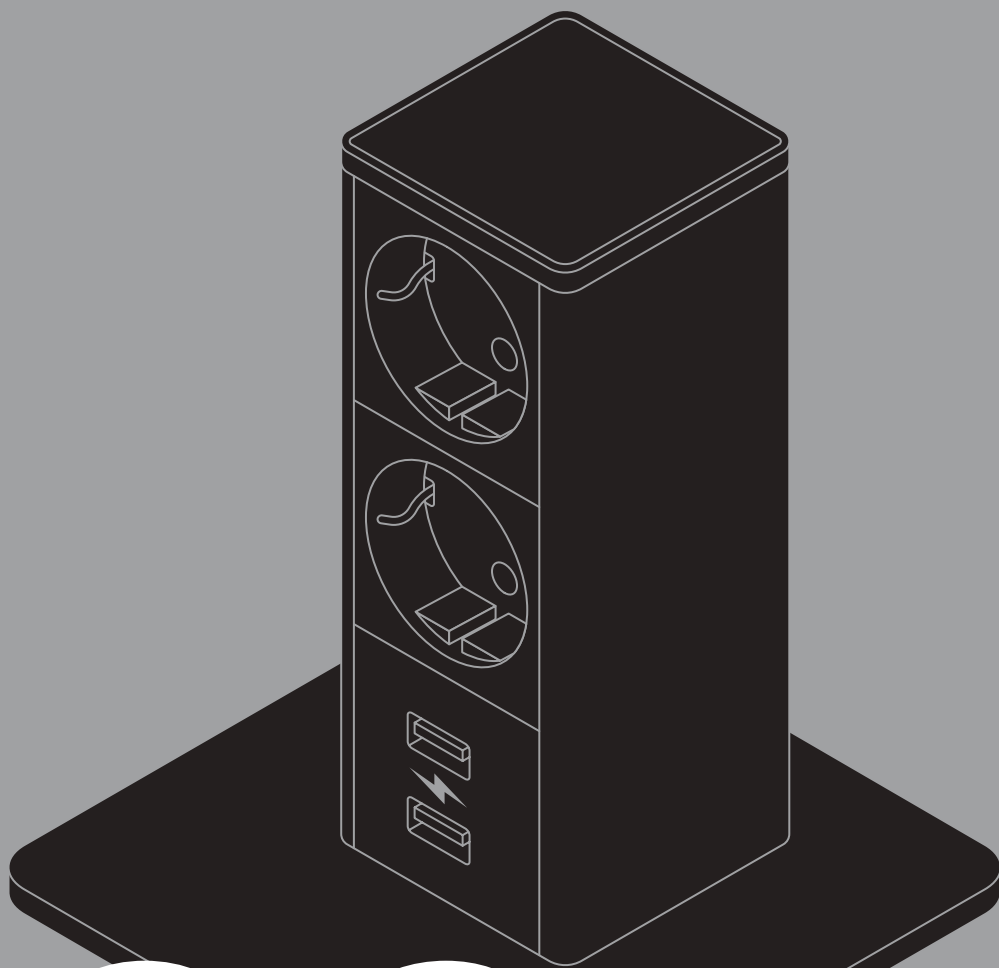
..

On request
any length and connector

StandUp

Where it's needed

26



03

StandUp makes unreachable wall or floor sockets more accessible, bringing power within cable range of your laptop, mobile phone or other device.

StandUp is a versatile unit that can be placed wherever it is needed. When placed on a piece of furniture, it comprises an integral part of your décor, providing additional sockets within arm's reach.

It can easily be moved from location to location and fits right in to both your home and your office.

2-5

MODULES

27

MOST POPULAR CONFIGURATIONS

2P



3P



2P1USBC2



For available communications and power modules see pages 78 and 79

BENEFITS

easily portable

••

stable

••

easily fits into a range of surroundings

TOP SURFACE

Brushed
stainless steel

••

White stainless
steel

••

Black stainless
steel

••

Any RAL colour
on request

PLASTIC ELEMENTS

Black

••

White

MODULES

Black

••

White

ALUMINIUM

Oxide coating,
Sand Brushed

••

Black

••

White





VOLTAGE
100-250 V max

CURRENT
16 A max

FREQUENCY
50-60 Hz

TEMPERATURE
0 – 40°C

RELATIVE HUMIDITY
0 – 95 % (non-condensing)

PROTECTION
IP 40



INSTALLATION

Freestanding, movable

CABLES

Standard

Integrated 2.5 m cable
with Schuko plug

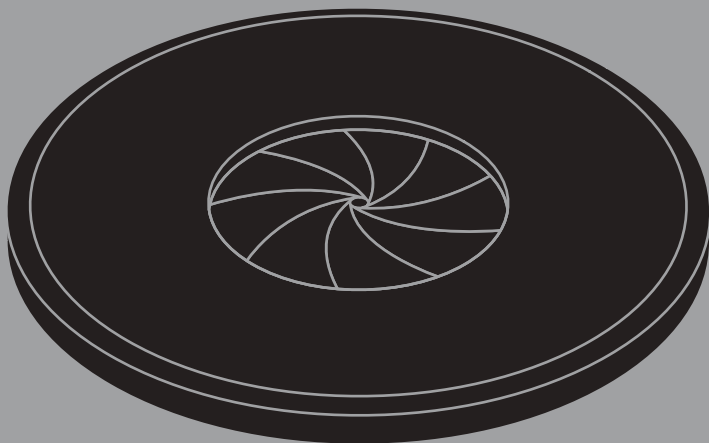
..

On request

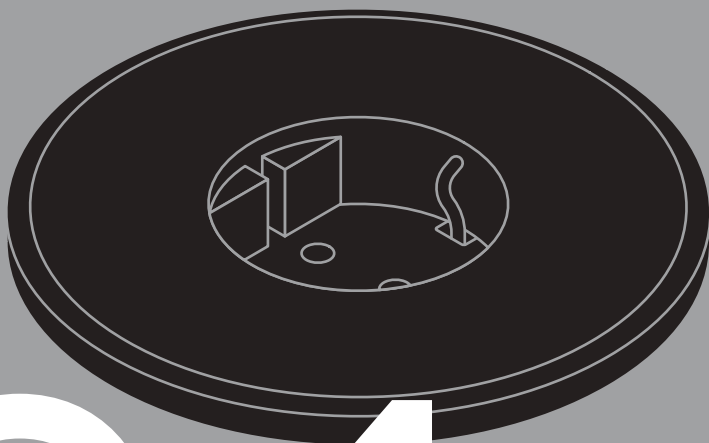
any length and connector

Iris

A portal to a world without cables



30



04

RECOMMENDED FOR:
Offices, waiting rooms,
restaurants, shopping
centres

Iris is a grommet, rosette, fast charger or a socket with a leaf shutter mechanism which, when the ring is turned, expands or contracts the central opening, adjusting it to a size that allows cables to pass through.

Iris brings harmony to every space, conducting cables from the desktop to underneath whilst lending a unique note to the interior.

Iris does a simple job – conducting cables and providing access to sockets – in a supremely elegant way.

1

MODULE

31

MOST POPULAR CONFIGURATIONS

1P



1P1USBC2



1USBC(A+C)



Cable holder • Cable through



For available communications and power modules see pages 78 and 79

BENEFITS

unique design

••

can also be used as a grommet

**PLASTIC
ELEMENTS**

Black

••

White

MODULES

Black

••

White

RIMBrushed
stainless steel



33

VOLTAGE
100-250 V max

CURRENT
16 A max

FREQUENCY
50-60 Hz

TEMPERATURE
0 – 40°C

RELATIVE HUMIDITY
0 – 95 % (non-condensing)

PROTECTION
IP 42

INSTALLATION

Furniture-mounted. Easy installation. Fits 80 mm diameter hole

••

Minimum desk thickness 10 mm

CABLES

Standard

Integrated 20 cm cable with EPN3MO connector

••

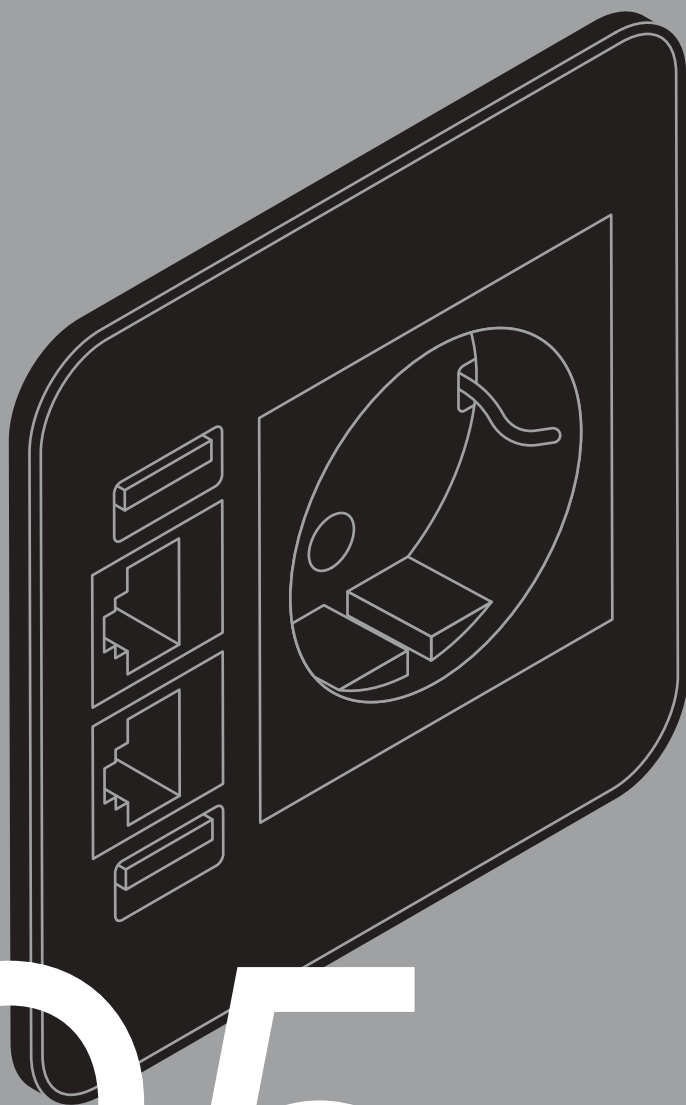
On request

any length and connector

Source

A source of good energy

34



05

RECOMMENDED FOR:
Offices, schools
and universities

Source houses a power socket, two chargers and two communications connectors of your choice. This means you can plug in a laptop, charge two mobile devices and share your screen via a HDMI connection, all at the same time. It is suited to all locations where free space is at a premium.

Source can be supplied in any colour to match your interior décor. It can be installed in an existing opening, or a new one can easily be bored with a standard 80 mm-diameter hole saw.

3

MODULES (MAX) WITH 2 USB CHARGING SOCKETS

35

MOST POPULAR CONFIGURATIONS

1P



1PIUSBC2



1PIUSBC2-2RJ45



For available communications and power modules see pages 78 and 79

BENEFITS

plug socket, charger and two communication connectors in an 80 mm diameter hole

••

install by hand in an 80 mm diameter hole

••

fits almost flush to desk

**TOP
SURFACE**

Brushed
stainless steel

••

White stainless
steel

••

Black stainless
steel

••

Any RAL colour
on request

**PLASTIC
ELEMENTS**

Black

••

White

MODULES

Black

••

White

VOLTAGE
100-250 V max

CURRENT
16 A max

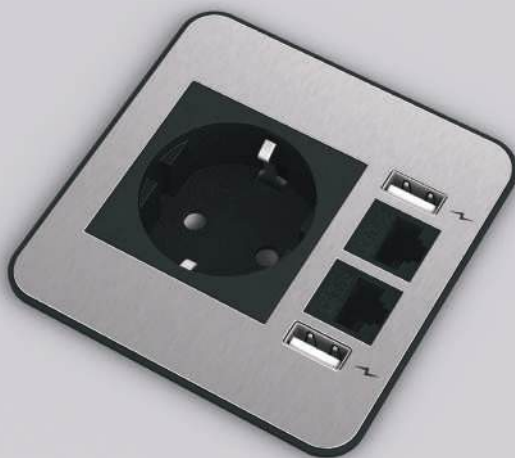
FREQUENCY
50-60 Hz

TEMPERATURE
0 – 40°C

RELATIVE HUMIDITY
0 – 95 % (non-condensing)

PROTECTION
IP 40





INSTALLATION

Furniture-mounted. Easy installation. Fits 80 mm diameter hole

••

Desk thickness from 12 to 47 mm

CABLES

Standard

Integrated 20 cm cable with EPN3MO connector

••

On request

any length and connector

SourceCover

Close the lid and the unit
becomes a decorative
feature on your desk

38



06

RECOMMENDED FOR:
Offices, schools
and universities

Everything you need is housed in a standard circular 80 mm-diameter opening, and not only that, it has a cover with an 180-degree hinge.

SourceCover provides a plug socket to power a laptop or other device, two USB charge sockets for charging mobile devices, and any two communications connectors of your choice to connect to other devices in your environment. Should you not need connectors or USB chargers then SourceCover looks just fine without them, too.

3

MODULES (MAX) WITH
2 USB CHARGING SOCKETS

39

MOST POPULAR CONFIGURATIONS

1P



1PIUSBC2



1PIUSBC2-2RJ45



For available communications and power modules see pages 78 and 79

BENEFITS

plug socket, charger and two communication connectors in an 80 mm hole, with a cover too

..

cover protects from dust and liquids

..

install by hand in an 80 mm diameter hole



TOP SURFACE

Brushed stainless steel

••

White stainless steel

••

Black stainless steel

••

Any RAL colour on request

PLASTIC ELEMENTS

Black

••

White

MODULES

Black

••

White

COVER

Oxide coating, Sand Brushed

••

Black

••

White

VOLTAGE
100-250 V max

CURRENT
16 A max

FREQUENCY
50-60 Hz

TEMPERATURE
0 – 40°C

RELATIVE HUMIDITY
0 – 95 % (non-condensing)

PROTECTION
IP 42

INSTALLATION

Furniture-mounted. Easy installation. Fits 80 mm diameter hole

••

Desk thickness from 12 to 47 mm

CABLES

Standard

Integrated 20 cm cable with EPN3MO connector

••

On request

any length and connector



PopUp

Sockets that pop up when they're needed

42



07

When not in use, the sockets are located where they should be – under the surface of the desk. When they are needed, a light press on the rounded, stainless steel square brings up two plug sockets, or a plug socket and fast charger.

It's ideal for kitchens because it can be inset into any uniform material so as to sit flush with the work surface, or into wall-mounted cabinets, leaving the work surface clear and much-needed plug sockets close to hand.

2

MODULES

43

MOST POPULAR CONFIGURATIONS

2P



1PIUSBC2



1PIUSBC (A+C)



For available communications and power modules see pages 78 and 79

BENEFITS

can be installed in kitchen cabinets

••

install by hand in an 80 mm diameter hole

••

sits nearly flush with work surface allowing full use of the worktop when unit is not in use

••

available in all colours

TOP SURFACE

Brushed
stainless steel

••

White stainless
steel

••

Black stainless
steel

••

Any RAL colour
on request

PLASTIC ELEMENTS

Black

••

White

MODULES

Black

••

White

PANEL

Oxide coating,
Sand Brushed

••

Black

••

White





VOLTAGE
100-250 V max

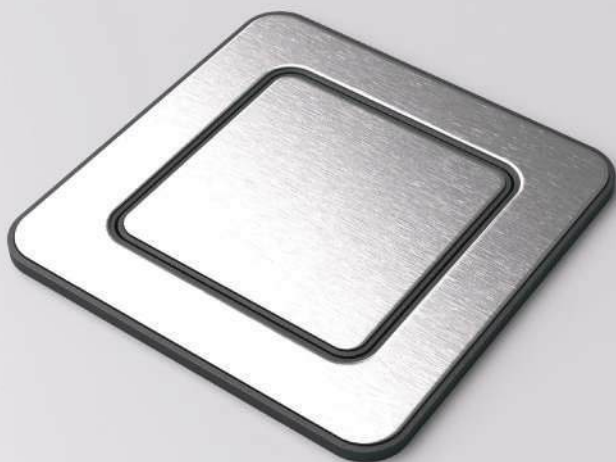
CURRENT
16 A max

FREQUENCY
50-60 Hz

TEMPERATURE
0 – 40°C

RELATIVE HUMIDITY
0 – 95 % (non-condensing)

PROTECTION
IP 42



INSTALLATION

Furniture-mounted. Easy installation. Fits 80 mm diameter hole

..

Desk thickness from 8 to 45mm

CABLES

Standard

Integrated 2 m cable with suitable plug

..

On request

cable longer than 2 m and connector

Frame

Simply elegant



46

08

Frame exudes elegance and class, with plug sockets inset in a robust stainless steel frame. The outside edge of the frame is bevelled to ensure it is gentle to the touch and that objects can slide easily over it.

Depending on available space and your needs, the unit can be fitted with between 2 and 5 power sockets, and the exact combination of communications connector, power socket and charger modules is up to you.

2, 3 & 5 MODULES

47

MOST POPULAR CONFIGURATIONS

2P



2P1USBC2



3P-2RJ45-1USBC-1HDMI



For available communications and power modules see pages 78 and 79

BENEFITS

- stainless steel frame
- robust
- exclusive look



48

PLASTIC ELEMENTS

Black

••

White

MODULES

Black

••

White

ALUMINIUM

Black

••

White

BOX 1

Brushed
stainless steel

••

Black

••

White

VOLTAGE
100-250 V max

CURRENT
16 A max

FREQUENCY
50-60 Hz

TEMPERATURE
0 – 40°C

RELATIVE HUMIDITY
0 – 95 % (non-condensing)

PROTECTION
IP 40

INSTALLATION

Fits into a rectangular opening. Dimensions given in instructions

..

Mounts on desk thickness between 15 and 50 mm

CABLES

Standard

Integrated 20 cm cable with EPN3MO connector

..

On request

any length and connector

2023

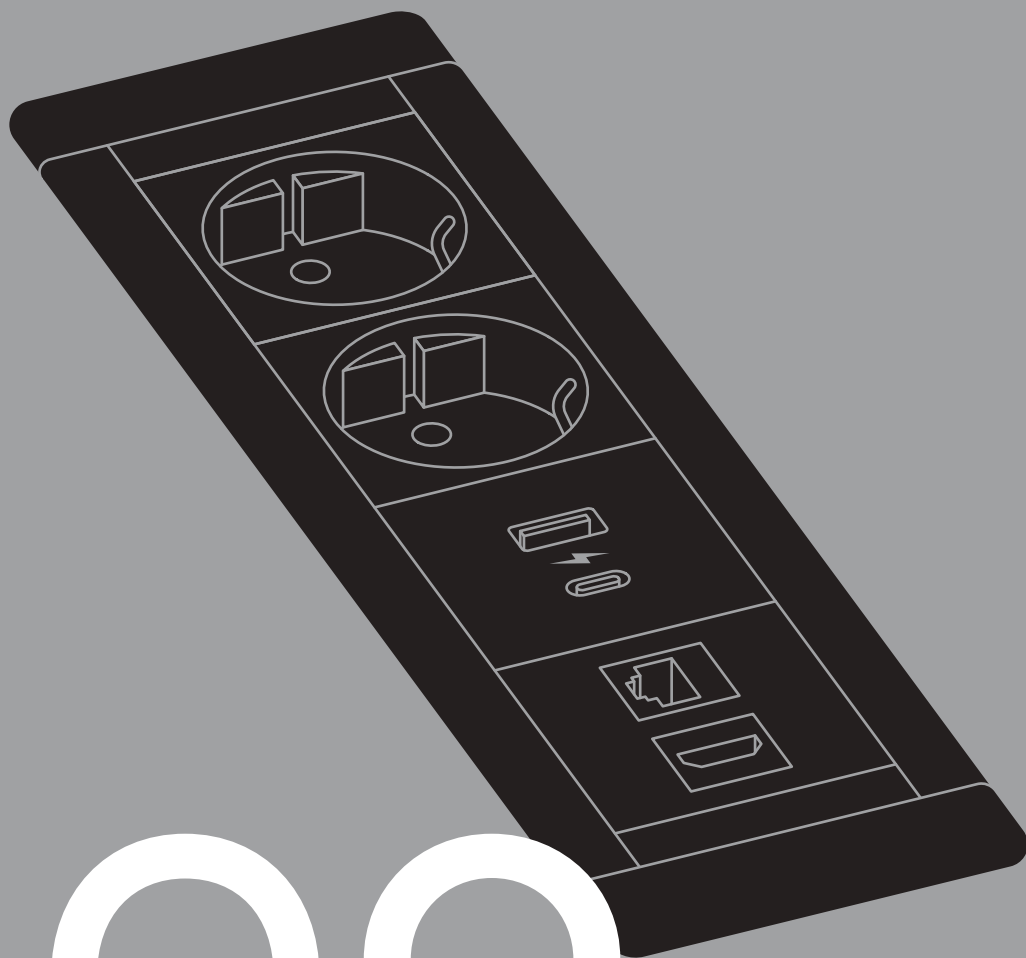


49

DIGITEL

SlimFrame

The thickness of a standard
kitchen counter



50

09

RECOMMENDED FOR:
Offices, schools,
hotel rooms

Whether installing in furniture with drawers, bedside tables or kitchen islands, it is not just the space on the top surface that is at a premium, but often the space below too, and this is where SlimFrame provides maximum savings.

Thanks to its shallow profile SlimFrame comes into its own in hotel rooms, classrooms, waiting rooms and similar spaces in which any other unit would be more difficult to install.

2-7

MODULES

MOST POPULAR CONFIGURATIONS

2PIUSBC2



3PIUSBC2



2PIUSBC2-2RJ45



2PIUSBC2-2RJ45-1USBCIHDMI



For available communications and power modules see pages 78 and 79

BENEFITS

- minimum possible depth
- the minimum of lines

PLASTIC ELEMENTS

Black

••

White

MODULES

Black

••

White

ALUMINIUM

Oxide coating,
Sand Brushed

••

Black

••

White



VOLTAGE
100-250 V max

CURRENT
16 A max

FREQUENCY
50-60 Hz

TEMPERATURE
0 – 40°C

RELATIVE HUMIDITY
0 – 95 % (non-condensing)

PROTECTION
IP 40



2023

53

INSTALLATION

Fits into a rectangular opening. Dimensions given in instructions

••

Mounts on desk of thickness 3 mm or more

CABLES

Standard

Integrated 20 cm cable with EPN3MO connector

••

On request

any length and connector

DIGITEL

SlimCover

Top installation

54



10

RECOMMENDED FOR:
Offices, kitchens, schools

SlimCover has a stylish lid which shields the sockets and protects them from the environment.

What sets SlimCover apart from most other units with a lid is its depth – just 40 mm. This means that it takes up only a tiny amount of space underneath the surface in which it is installed. Its minimal dimensions make it suitable for all kinds of environments, especially those locations in which other units cannot easily be installed.

2-6

MODULES

55

MOST POPULAR CONFIGURATIONS

2PIUSBC2



3PIUSBC2



2PIUSBC2-2RJ45



2PIUSBC2-2RJ45-1USBC1HDMI



For available communications and power modules see pages 78 and 79

BENEFITS

- minimum possible depth.
- cover protects sockets from dust and liquids
- can be mounted from the front

PLASTIC ELEMENTS

Black

••

White

MODULES

Black

••

White

ALUMINIUM

Oxide coating,
Sand Brushed

••

Black

••

White

56



VOLTAGE
100-250 V max

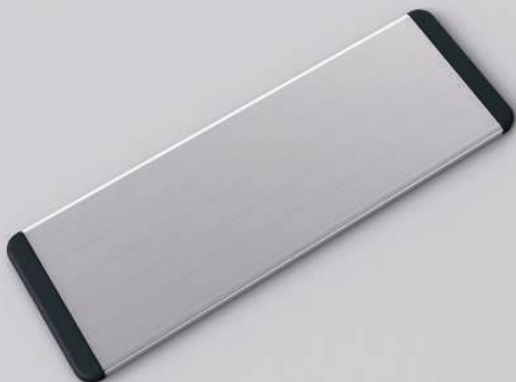
CURRENT
16 A max

FREQUENCY
50-60 Hz

TEMPERATURE
0 – 40°C

RELATIVE HUMIDITY
0 – 95 % (non-condensing)

PROTECTION
IP 42





INSTALLATION

Fits into a rectangular opening. Dimensions given in instructions

••

Mounts on desk of thickness 3 mm or more

CABLES

Standard

Integrated 20 cm cable with EPN3MO connector

••

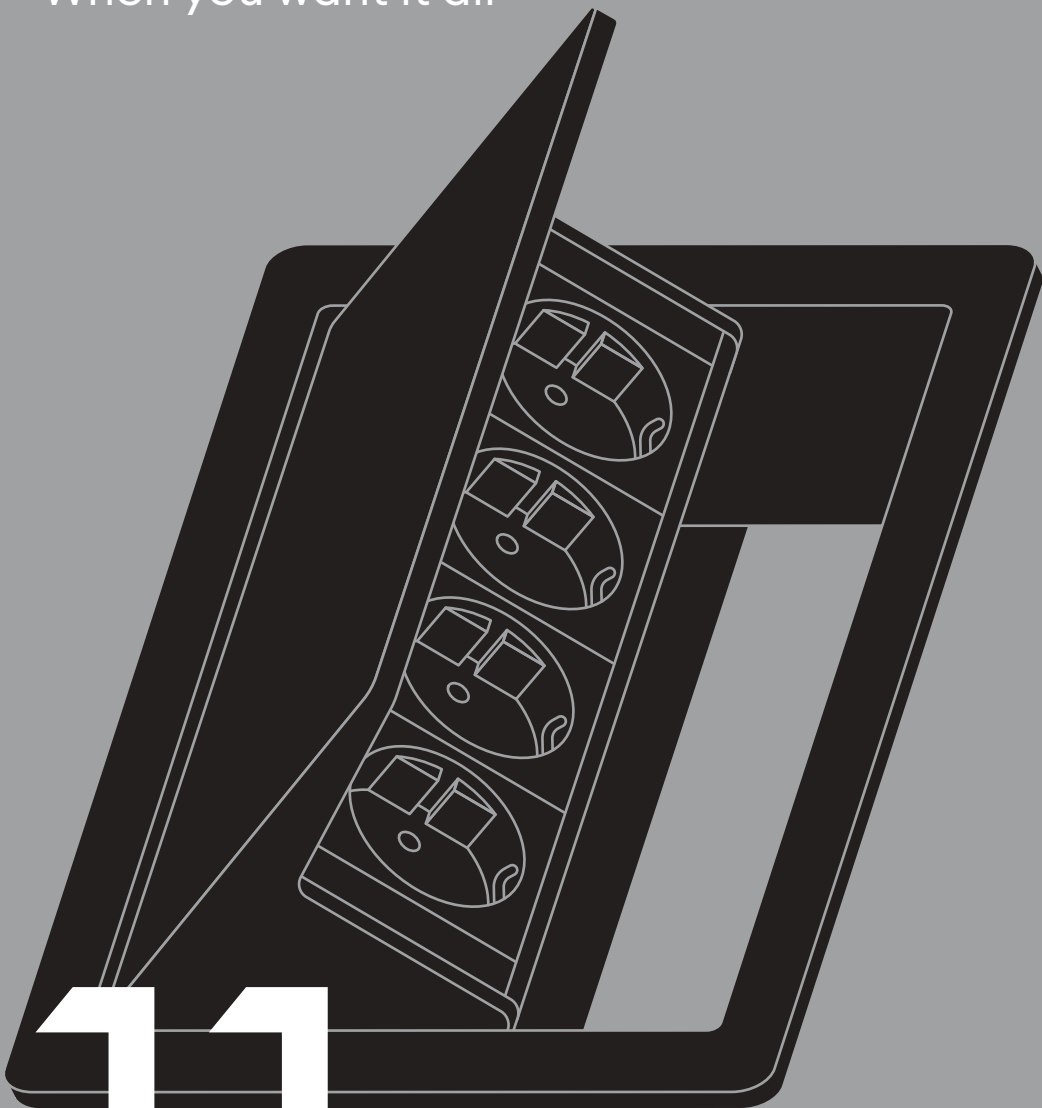
On request

any length and connector

FlipUp

When you want it all

58



11

RECOMMENDED FOR:
Conference and
meeting rooms

Press the lid to raise it, plug in, and then easily close it again. It sounds simple because it is. The concept behind it is that sockets will always be situated under the desk and the cover closed whether the unit is in use or not.

Not only are the sockets always situated under the desk and out of sight, but they only appear when they are needed with a light press of the lid.

Ideal for office and conference room desks, but also for wall-mounted kitchen units.

3-7

MODULES

59

MOST POPULAR CONFIGURATIONS

2P1USBC2



3P1USBC2



2P1USBC2-2RJ45



For available communications and power modules see pages 78 and 79

BENEFITS

simply press lightly to open, plug in and close

••

socket position makes it easy to plug in

••

sockets are always protected from dust and liquids

••

available in all colours

**PLASTIC
ELEMENTS**

Black

MODULES

Black

ALUMINIUM

Black

COVERBrushed
stainless steel

••

White stainless
steel

••

Black stainless
steel

••

Any RAL colour
on request

VOLTAGE
100-250 V max

CURRENT
16 A max

FREQUENCY
50-60 Hz

TEMPERATURE
0 – 40°C

RELATIVE HUMIDITY
0 – 95 % (non-condensing)

PROTECTION
IP 42



2023



61

INSTALLATION

Fits into a rectangular opening. Dimensions given in instructions

••

Mounts on desk of thickness between 12 to 60 mm

CABLES

Standard

Integrated 20 cm cable with EPN3MO connector

••

On request

any length and connector

DIGITEL

Kompakt

Two-in-one – sockets both under and on top of the desk



62

12

RECOMMENDED FOR:
Offices

With its sockets under the desk, Kompakt provides you with all the sockets you need for devices that are always plugged in, and also keeps all their cables under the desk.

The same device also provides sockets on the top side of the desk for plugging in mobile devices.

No cables are sticking out of Kompakt. The unit is also easy to install and handle and has a stylish lid. It can be installed from the underside or from the top of the desk.

2-7

MODULES

63

MOST POPULAR CONFIGURATIONS

Beneath the desk - back side



On top of the desk



Beneath the desk - front side



2P-2RJ45//4P

For available communications and power modules see pages 78 and 79

BENEFITS

twice as many sockets
under the desk

••

a unique solution in the market



PLASTIC ELEMENTS

Black

••

White

MODULES

Black

••

White

ALUMINIUM

Oxide coating,
natural look

••

Black

••

White

INSTALLATION

Fits into a rectangular opening. Dimensions given in instructions

••

Mounts on desk thickness between 10 and 50 mm

CABLES**Standard**

Integrated EPN3MO connector



65

VOLTAGE
100-250 V max

CURRENT
16 A max

FREQUENCY
50-60 Hz

TEMPERATURE
0 – 40°C

RELATIVE HUMIDITY
0 – 95 % (non-condensing)

PROTECTION
IP 42



DIGITEL

KompaktS

Maximally accommodated to you



66

13

RECOMMENDED FOR:

Offices, classrooms,
meeting rooms, hotel rooms

It sits completely flush with the desk, and the sockets are slightly tilted towards you, making it easier to plug in mobile devices.

The cover serves to protect the sockets from environmental factors, spilt liquids and dust, and it holds still in one position when it's open. With the lid closed, the unit completely blends into the work surface, again leaving the work surface flat and available for use for other purposes.

2-7

MODULES

67

MOST POPULAR CONFIGURATIONS

2P



2P1USBC2



3P-2RJ45 1USBC 1HDMI



3P1USBC2-2RJ45



For available communications and power modules see pages 78 and 79

BENEFITS

can be mounted on a desk of any thickness

••

cover protects from dust and liquids

••

slightly tilted sockets

PLASTIC ELEMENTS

Black

••

White

MODULES

Black

••

White



ALUMINIUM

Oxide coating,
natural look

••

Black

••

White



VOLTAGE
100-250 V max

CURRENT
16 A max

FREQUENCY
50-60 Hz

TEMPERATURE
0 – 40°C

RELATIVE HUMIDITY
0 – 95 % (non-condensing)

PROTECTION
IP 42

INSTALLATION

Fits into a rectangular opening. Dimensions given in instructions

••

Mounts on desk of thickness 10 mm or more

CABLES

Standard

Integrated 20 cm cable with EPN3MO connector

••

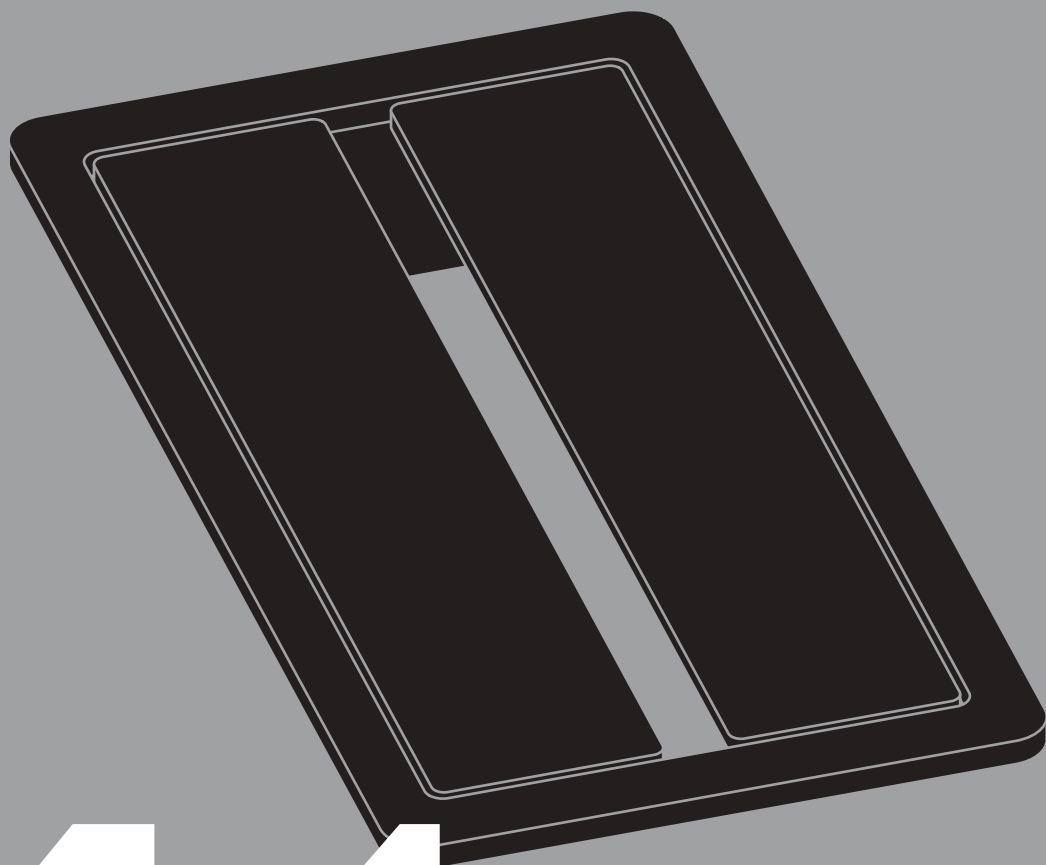
On request

any length and connector



WingsPremium

Give your business new wings



70

14

WingsPremium is not just a beautiful, decorative set of shutters, but it also significantly upgrades the functionality of your meeting-room table.

WingsPremium is a solution for meeting-room tables that provides a large number of varied sockets for everybody present at the meeting. All the excess cable from the desktop can be pushed through the gap in the shutters and under the table, freeing up space above so you can work free of hindrance.

2

UNDERDESK DEVICES WITH 7 MODULES EACH (MAX)

Single



Double



For available communications and power modules see pages 78 and 79

BENEFITS

tilted plug sockets allow for easy connection from both sides of the table

••

excess cable can be stowed under the lid

••

available in all colours

PLASTIC ELEMENTS

Black

TOP SURFACE

Brushed
stainless steel

••

White stainless
steel

••

Black stainless
steel

••

Any RAL colour
on request

72



VOLTAGE
100-250 V max

CURRENT
16 A max

FREQUENCY
50-60 Hz

TEMPERATURE
0 – 40°C

RELATIVE HUMIDITY
0 – 95 % (non-condensing)

PROTECTION
IP 30



73

INSTALLATION

Fits into a rectangular opening. Dimensions given in instructions

••

Mounts on desk of thickness 12 mm or more

CABLES

Standard

Integrated 20 cm cable with EPN3MO connector

••

On request

any length and connector

WingsRosette

Give your business new wings



74

15

When we need access to cables to connect to a screen, a projector or the Internet.

When we need additional sockets for power or for charging batteries.

When we need access from above to the basket under the desk.

Tables in meeting rooms can also benefit from a flap giving access to additional power points underneath.

75

Rosette
without bay



BENEFITS

allows cables to pass up through to the table top

••

available in all colours

PLASTIC ELEMENTS

Black

TOP SURFACE

Brushed
stainless steel

••

White stainless
steel

••

Black stainless
steel

••

Any RAL colour
on request





INSTALLATION

Fits into a rectangular opening. Dimensions given in instructions

••

Mounts on desk of thickness 12 mm or more

Modules

The modular nature of our units means they can accept different power modules (Schuko, GB, Danish, French, Swiss or US sockets or USB charge port) and a variety of communication modules (RJ45, USB, USB hub, HDMI, VGA, audio 3.5 mm, XLR, DisplayPort etc.). Power modules must be factory installed in the housing, while other modules can be mounted by the distributor or even the customer.

POWER



SCHUKO TYPE F



TYPE E, FRENCH



DANISH TYPE K



MULTISTANDARD

COMMUNICATION



K1 keystone carrier



K2 keystone carrier



VGA carrier



VGA panel mount



Display port panel mount



XLR panel mount



VGA panel mount and Audio panel mount



Display port panel mount and Audio panel mount



RJ45 Keystone Coupling socket



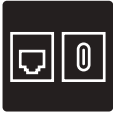
HDMI Keystone Coupling socket



USB C/C Keystone Coupling socket



USB 3.0 Keystone Coupling socket



RJ45 Keystone Coupling socket and USB C/C Keystone Coupling socket



USB 3.0 Keystone Coupling socket and HDMI Keystone Coupling socket



USB C/C Keystone Coupling socket and HDMI Keystone Coupling socket



2x RJ45 Cable Keystone Shielded



2x HDMI Keystone Coupling socket



2x USB 3.0 Keystone Coupling socket



SCHUKO TYPE F
ANGLE 30°



SCHUKO TYPE F
ANGLE 45°



SURGE
PROTECTION



SWISS TYPE J



UNEL
(SCHUKO ITALIAN)



USA TYPE B



UK TYPE G



ON/OFF SWITCH



ITALY TYPE L

CHARGERS



USB A+A
CHARGER
12W



USB A+C
CHARGER
20W



Cable holder



Display port
Carrier



Blind module



Audio panel
mount



2x Audio panel
mount



3x Audio panel
mount



RJ45 Cable
Keystone



RJ45 Keystone
Coupling socket
Shielded



RJ45 Cable
Shielded



RJ45 Keystone
Coupling socket
and HDMI Keystone
Coupling socket



USB 3.0 Keystone
Coupling socket and
USB C/C Keystone
Coupling socket



RJ45 Keystone
Coupling socket and
USB 3.0 Keystone
Coupling socket



2x RJ45 Keystone
Coupling socket



2x RJ45 Keystone
Coupling socket
Shielded



2x RJ45 Cable
Keystone



2x USB CC
Keystone
Coupling socket

ADDRESS

Potes Ključ 91
32000 Čačak, Serbia

PHONE

+381 (0)32 55 78 000
+381 (0)69 55 78 003

E-MAIL

info@digitel.rs

www.digitel.rs