

GOLD



Adjustment Guide

 **DUOREST®**

Adjustable Headrest

Optional Headrest accessory adjusts 72mm (2.8") seven steps vertically. The ultra-flexible rubber joint supports user's head very comfortably.

Arms

Optional 3D armrest
Arms allow fluid adjustment in two directions :

- Height adjustment range : 70mm (2.8")

Adjustable Backrest

Backrests allow fluid adjustment in two directions :

- Height adjustment range : 20mm (0.8")
- Width adjustment range : 80mm (3.1")

Self Tension Tilt Mechanism

Recline back and seat movement featuring a 4:1 back to seat tilt ratio.

- Back reclines 16° from upright position
- Backrest Tilt Lock in Multi positions by lever

DUOREST® System

DUOREST® System makes dynamic sitting by allowing freedom of movement in any position.

DUOREST® System reduces fatigue and alleviates back pains associated with long sitting.

Base

27" (684mm) Five-arm base is available in Black and White.

Casters

Soft dual-wheel casters are 50mm O.D. for use on hard floors. Only available in Black.



FEATURES

- Ergonomic DUOREST® System
- Self Tension Tilt Mechanism
- Backrest Tilt Lock in Multi positions by lever
- Standard Seat Slider
- Height Adjustable Armrest with PU Pad
- 50mm Hard Floor Casters in Black
- Standard 300lbs. Weight capacity
- Flexible Headrest

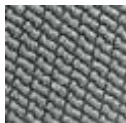
COLORS

BLACK FRAME

Fabric (Back & Seat)



EK20-BLACK
(FEKBK)



EK20-GRAY
(FEKGY)



EK20-BLUE
(FEKDB)



EK20-BEIGE
(FEKBI)

Mesh (Seat)



ID102-BLACK

Syn. leather(Headrest)

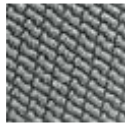


BLACK

WHITE FRAME



EK20-BEIGE
(FEKBI)



EK20-GRAY
(FEKGY)



EK20-GREEN
(FEKBG)



EK20-RED
(FEKRD)



ID102-LIGHT GRAY



LIGHT GRAY

STATEMENT OF LINE



Sponge seat



Sponge seat
Without headrest



Mesh seat



Mesh seat
Without headrest

CERTIFICATIONS

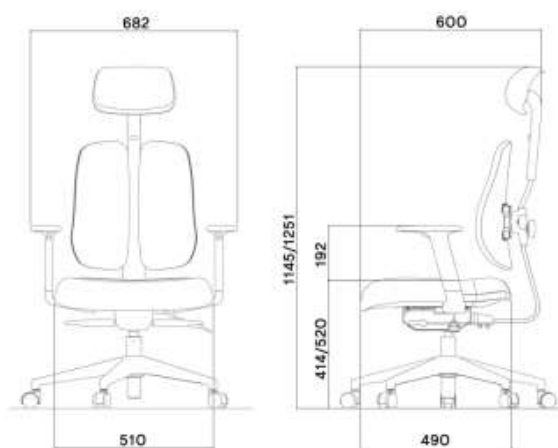


ANSI/BIFMA X5.1-2017
ISO 14001 & 9001

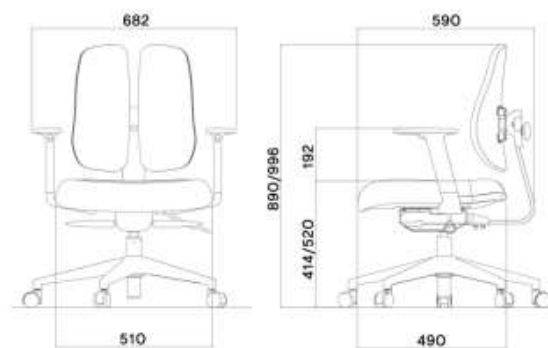
SPECIFICATIONS

• Net Weight	18.2kg (40lbs) w/o headrest 16.7kg (37lbs)
• Headrest Frame	PU / PA6+GF30%
• Backrest Frame	STEEL
• Seat (Cushion /Mesh)	Polyurethane fill / PA6+GF30%
• Seat Pan Frame	PU / PP
• Adj. Armrest	PA6+GF30%
• Base Materials	PA6+GF30%
• Casters Materials	PA6+PE
• Carton Box Size	685*650*415 (mm)
• Container Loading Plan	20ft: 139boxes//40ft: 288boxes//40H: 350boxes

DIMENSIONS



D2500G-DAS : net weight 18.2Kg, gross weight 22.48Kg



D025G-DAS : net weight 16.8Kg, gross weight : 21.08Kg

DUOBACK CO.,LTD

HQ (Factory) : 27, Gajaeul-ro 32beongil, Seo-gu, Incheon, 22829, Korea.
 Sales Office : #1002, 41, Digital-ro 31gil, Guro-gu, Seoul, 08375, Korea
 T : +82-2-6204-2505 / F : +82-32-816-4817 / DUO1350@duoback.co.kr
 www.DUOREST.com



ALPHA



Adjustable Headrest

Optional Headrest accessory adjusts 49mm (1.9") vertically.

- Pivoting range : 63°

Arms

3D arms allow fluid adjustment in three directions :

- Height adjustment range : 72mm (2.8")
- Front-to-back adjustment range : 40mm (1.6")
- Pivoting arm caps : 17° inward and 17° outward

Mesh Seat

Optional Mesh Seat provides dynamic support and allows airflow, providing a comfortable sit in any environment.

Weight-activated Synchronized Mechanism

Auto-Balance tension adjustment utilizes the weight of the user to balance resistance of the back.

3:1 back to seat synchronous movement with 3 position back lock.

- Back reclines 18° from upright position.

Adjustable Backrest

Backrests allow fluid adjustment in two directions :

- Height adjustment range : 43mm (1.7")
- Width adjustment range : 33mm (1.3")

DUOREST® System

DUOREST® System makes dynamic sitting by allowing freedom of movement in any position.

DUOREST® System reduces fatigue and alleviates back pains associated with long sitting.

Seat Slider

Seat depth adjusts within a 50mm (2.0") range to accommodate users of varying leg lengths.



Base

27" (688mm) Five-arm base is available in plastic or polished aluminum.

Casters

50mm O.D. casters for use on hard floors.

Only available in Black.

FEATURES

- Ergonomic DUOREST® System
- Adjustable headrest with PU Pad
- Synchronized Mechanism with Tension Adjuster from DONATI
- Backrest Tilt Lock in 4 positions by lever
- Standard Seat Slider
- 3-way Adjustable Armrest
- Frame available in Black and White
- Base available in Black and White
- Standard 300 lbs. weight capacity

COLORS

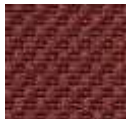
Black Frame

White Frame

Fabric (Back & Sponge seat)



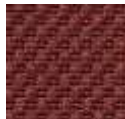
Black
(IT09BK)



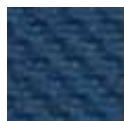
Berry
(IT09RD)



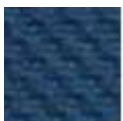
Gray
(IT09GY)



Berry
(IT09RD)



Deep blue
(T09BU)

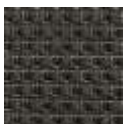


Deep blue
(T09BU)

Mesh (Seat)



ID102
Black



ID102
Dark gray

STATEMENT OF LINE



ALPHA-HBDA-S



ALPHA-HBDA-SW



ALPHA-HBDA-M



ALPHA-HBDA-MW

CERTIFICATIONS

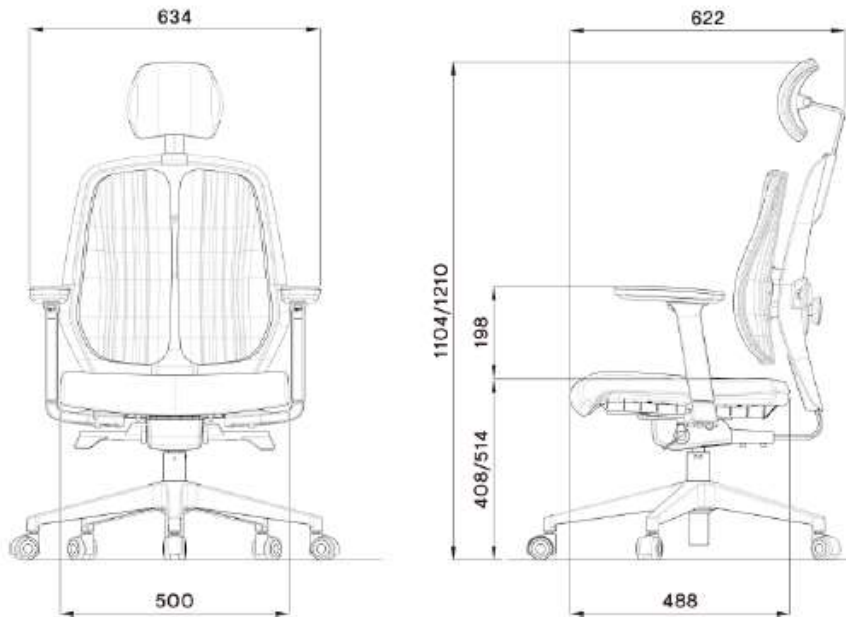
ANSI/BIFMA X5.1-2017
ISO 14001 & 9001



SPECIFICATIONS

• Net Weight (Fabric / Mesh)	16kg (35.3 lbs) / 18.6kg (41 lbs)
• Headrest Frame	PA6
• Backrest Frame	PA6
• Back shell	PA6
• Cushion Seat	Polyurethane fill
• Seat Pan Frame	PP
• Mesh Seat	Poly Elastomer
• Adj. Armrest	PA6
• Base Materials	PA6
• Casters Materials	PA6 and PU
• Carton Box Size	750*660*415 (mm)
• Container Loading Plan	20ft : 129 boxes // 40ft : 267 boxes // 40H : 315 boxes

DIMENSIONS



DUOBACK CO.,LTD

HQ (Factory) : 27, Gajaeul-ro 32beongil, Seo-gu, Incheon, 22829, Korea.
Sales Office : #1002, 41, Digital-ro 31gil, Guro-gu, Seoul, 08375, Korea
T : +82-2-6204-2505 / F : +82-32-816-4817 / DUO1350@duoback.co.kr
www.DUOREST.com



D2



Adjustment Guide

 **DUOREST®**

Adjustable Headrest

Optional Headrest accessory adjusts 63mm (2.5") vertically.

- Pivoting range : 60°

Arms

3D arms allow fluid adjustment in three directions :

- Height adjustment range : 72mm (2.8")
- Front-to-back adjustment range : 40mm (1.6")
- Pivoting arm caps : 17° inward and 17° outward

Seat

Seat Cover is removable for washing.

- Detachable and replaceable with the SMART SEAT based on Sensor Technology.
- Detachable and replaceable with the **VETAGEL** seat allow optimal distribution of pressure on the body by applying Multi-layer Honey Comb technology.

Weight-activated Synchronized Mechanism

Auto-Balance tension adjustment utilizes the weight of the user to balance resistance of the back.

3:1 back to seat synchronous movement with 3 position back lock.

Back reclines 18° from upright position.

Adjustable Backrest

Backrests allow fluid adjustment in two directions using Smart-Dial :

- Height adjustment range : 65mm (2.6")
- Width adjustment range : 65mm (2.6")

DUOREST® System

DUOREST® System makes dynamic sitting by allowing freedom of movement in any position.

DUOREST® System reduces fatigue and alleviates back pains associated with long sitting.

Seat Slider

Seat depth adjusts within a 50mm (2.0") range to accommodate users of varying leg lengths.

Base

27" (688mm) Five-arm base is available in plastic or polished aluminum.

Casters

50mm O.D. casters for use on hard floors.
Only available in Black.



FEATURES

- Ergonomic DUOREST® System with Smart Dial
- Weight-activated Synchronized Mechanism from DONATI
- Backrest Tilt Lock in 3 positions by lever
- Standard Seat Slider
- Detachable seat and Removable Seat Cover
- 3-way Adjustable Armrest
- 50mm Hard Floor Casters in Black
- Frame available in Black and White
- Base available in Black, White and Polished Aluminum
- Standard 300 lbs. weight capacity

COLORS

Black Frame

White Frame

Fabric / Syn.L Leather (Back & Sponge seat)



D2 Orange



D2 Gray



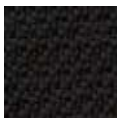
D2 Blue



D2 Green



Hole Black
Syn. leather



Ash Black



Ash Blue



Ash Gray



Ash Red

Mesh (Seat)

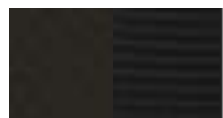


Black
(I102BK)



D.Gray
(I102DG)

VETAGEL (Seat)



Air mesh Black
(F14BK)



Air mesh green
(F14GN)

STATEMENT OF LINE



D2-200
Standard



D2-250
Without Headrest



D2-200M
Mesh seat



D2-200VS
Vetagel seat

CERTIFICATIONS

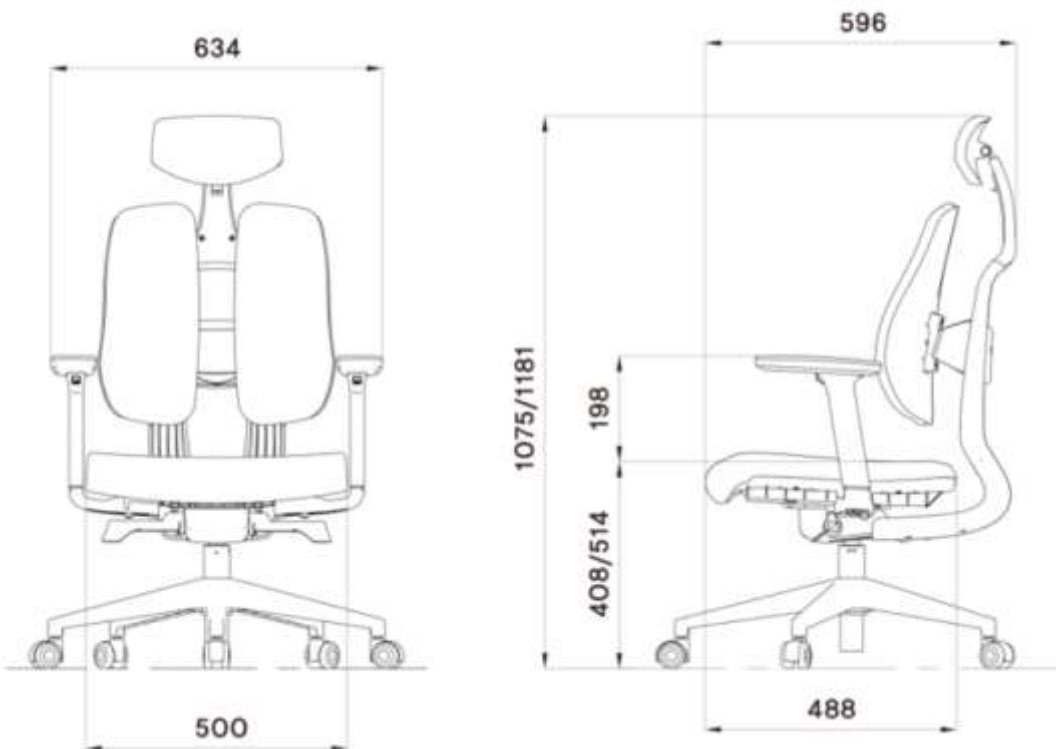
ANSI/BIFMA X5.1-2017
ISO 14001 & 9001



SPECIFICATIONS

• Net Weight	17.5kg (38.5 lbs)
• Headrest Frame	PA6
• Backrest Frame	PA6
• Cushion Seat	Polyurethane fill
• Seat Pan Frame	PP
• Adj. Armrest	PA6 and PU
• Base Materials	PA6
• Casters Materials	PA6 and PU
• Carton Box Size	685*650*415 (mm)
• Container Loading Plan	20ft : 137 boxes // 40ft : 288 boxes // 40H : 350 boxes

DIMENSIONS



DUOBACK CO.,LTD

HQ (Factory) : 27, Gajaeul-ro 32beongil, Seo-gu, Incheon, 22829, Korea.
Sales Office : #1002, 41, Digital-ro 31gil, Guro-gu, Seoul, 08375, Korea
T : +82-2-6204-2505 / F : +82-32-816-4817 / DUO1350@duoback.co.kr
www.DUOREST.com



D2A200B



Adjustment Guide

 **DUOREST®**

Adjustable Headrest

Optional Headrest accessory adjusts 72mm (2.9") vertically.

- Pivoting range : 64°

Arms

3D arms allow fluid adjustment in three directions :

- Height adjustment range : 68mm (2.7")
- Front-to-back adjustment range : 40mm (1.6")
- Pivoting arm caps : 15° inward and 15° outward

Seat

Seat Cover is removable for washing.

Seat pan is detachable and replaceable.

Weight-activated Synchronized Mechanism

Auto-Balance tension adjustment utilizes the weight of the user to balance resistance of the back.

3:1 back to seat synchronous movement with 3 position back lock.

Back reclines 18° from upright position.

Adjustable Backrest

Backrests allow fluid adjustment in two directions :

- Height adjustment range : 43mm (1.7")
- Width adjustment range : 33mm (1.3")

DUOREST® System

DUOREST® System makes dynamic sitting by allowing freedom of movement in any position.

DUOREST® System reduces fatigue and alleviates back pains associated with long sitting.

Seat Slider

Seat depth adjusts within a 55mm (2.2") range to accommodate users of varying leg lengths.

Base

27" (688mm) Five-arm base is available in plastic or polished aluminum.

Casters

Soft dual-wheel casters are 60mm O.D. for use on hard floors. Only available in Black.



FEATURES

- Ergonomic DUOREST® System
- Weight-activated Synchronized Mechanism from DONATI
- Backrest Tilt Lock in 3 positions by lever
- Standard Seat Slider
- Detachable seat and Removable Seat Cover
- 3-way Adjustable Armrest
- 60mm Hoodless Hard Floor Casters in Black
- Frame currently available only in Black
- Base available in Black, White and Polished Aluminum
- Standard 300 lbs. weight capacity

COLORS

Textile



EK34 Black
(E34BK)



EK34 M. Gray
(E34GY)



EK34 L. Gray
(E34GYL)



EK34 Blue
(E34BE)



EK34 Beige
(E34BI)

STATEMENT OF LINE



Standard
(D2A200B)



w/ Aluminum Base
(D2A200B-A)

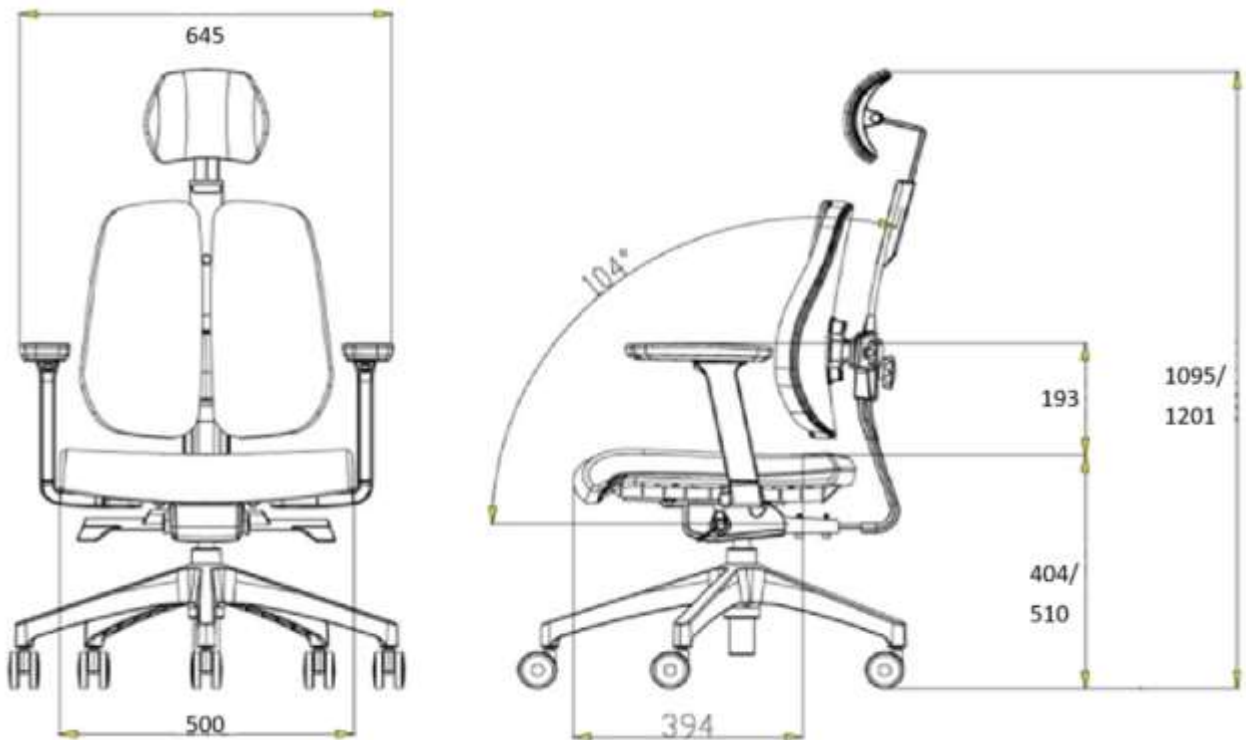
CERTIFICATIONS

ANSI/BIFMA X5.1-2017
TB117-2013
ISO 14001 & 9001

SPECIFICATIONS

• Net Weight	17.9kg (39.5 lbs)
• Headrest Frame	PA6
• Backrest Frame	PA6
• Cushion Seat	Polyurethane fill
• Seat Pan Frame	PP
• Adj. Armrest	PA6 and PU
• Base Materials	PA6
• Casters Materials	PA6 and PU
• Carton Box Size	695*660*435 (mm)
• Container Loading Plan	20ft : 137 boxes // 40ft : 288 boxes // 40H : 355 boxes

DIMENSIONS



DUOBACK CO.,LTD

HQ (Factory) : 27, Gajaeul-ro 32beongil, Seo-gu, Incheon, 22829, Korea.
 Sales Office : #1002, 41, Digital-ro 31gil, Guro-gu, Seoul, 08375, Korea
 T : +82-2-6204-2584 / F : +82-32-816-4817 / duo1350@duoback.co.kr
 www.DUOREST.com



LOGIQ



Adjustment Guide

Mesh Back

Provides dynamic support and allows airflow, providing a comfortable sit in any environment.

Arms

Comfort Stationary Armrest.

Tension adjustable**Synchronized Mechanism**

2:1 back to seat synchronous movement with 3 position back lock.

Back reclines 28° from upright position.

Tilt Tension Adjuster

Turn knob clockwise to tighten the tilt tension and counter clockwise to loosen tilt tension.

Base

27" (688mm) Five-arm base is available in plastic.

Casters

Soft dual-wheel casters are 50mm O.D. for use on hard floors. Only available in Black.



FEATURES

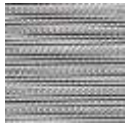
- Mesh Back
- Synchronized Mechanism
- Backrest Tilt Lock in 3 positions by lever
- Comfort Stationary Urethane Armrest
- 50mm Hard Floor Casters in Black
- Frame available in Black
- Base available in Black
- Standard 300 lbs. weight capacity

COLORS

Mesh (Back)



Line Mesh Black
(M19BK)



Line Mesh Grey
(M19GY)



Line Mesh Green
(M19GN)



Line Mesh Red
(M19RD)

Textile (Seat)



New Eco Black
(IT09BK1)

STATEMENT OF LINE



LO-51CR
Standard

CERTIFICATIONS

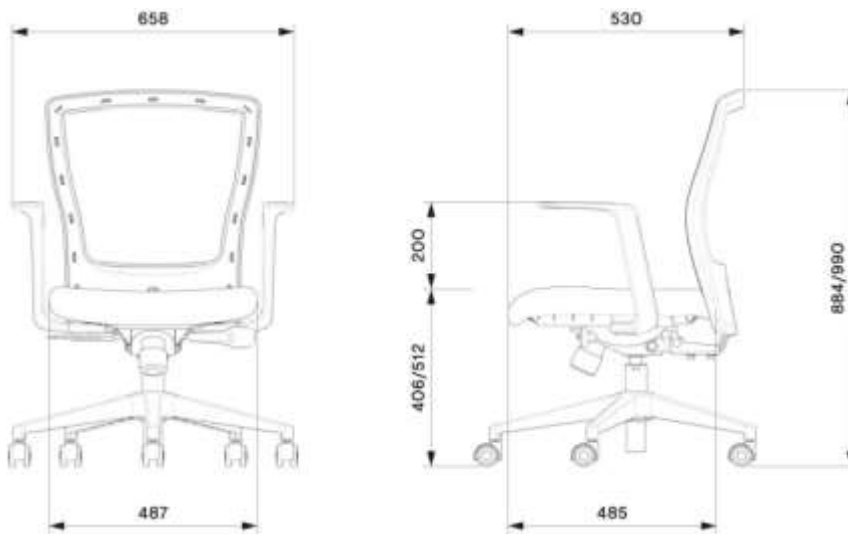
ANSI/BIFMA X5.1-2017
ISO 14001 & 9001



SPECIFICATIONS

• Net Weight	15.4kg (33.9 lbs)
• Backrest Frame	PA6+GF30%
• Cushion Seats	Polyurethane fill
• Seat Pan Frame	PP
• Armrest	PP
• Base Materials	PA6+GF30%
• Casters Materials	PA6 and PE
• Carton Box Size	720*650*360(mm)
• Container Loading Plan	20ft: 168 boxes // 40ft: 342 boxes // 40H: 378 boxes

DIMENSIONS



LO-51CR : net weight 15.4kg, gross weight 18.2kg

DUOBACK CO.,LTD

HQ (Factory) : 27, Gajaeul-ro 32beongil, Seo-gu, Incheon, 22829, Korea.
Sales Office : #1002, 41, Digital-ro 31gil, Guro-gu, Seoul, 08375, Korea
T : +82-2-6204-2505 / F : +82-32-816-4817 / DUO1350@duoback.co.kr
www.DUOREST.com



Lima



Adjustable Headrest

Optional Headrest accessory adjusts 49mm (1.9") vertically.

- Pivoting range : 56°

Arms

3D arms allow fluid adjustment in three directions :

- Height adjustment range : 72mm (2.8")
- Front-to-back adjustment range : 40mm (1.6")
- Pivoting arm caps : 17° inward and 17° outward

Mesh Back

Provides dynamic support and allows airflow, providing a comfortable sit in any environment.

Synchronized Mechanism

Tension adjustable mechanism. 2:1 back to seat synchronous movement with 3 position back lock.

Back reclines 28° from upright position.

Base

27" (688mm) Five-arm base is available in Black and White.

Casters

Soft dual-wheel casters are 50mm O.D. for use on hard floors. Only available in Black.



FEATURES

- Adjustable headrest with PU Pad
- Mesh Back
- Synchronized Mechanism
- Backrest Tilt Lock in 3 positions by lever
- Adjustable Armrest with PU Pad
- 50mm Hard Floor Casters in Black
- Frame available in Black and White
- Base available in Black and White
- Standard 300 lbs. weight capacity

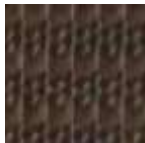
COLORS

Mesh (Back)

Black Frame



Black



Cocoa

White Frame



Gray



Beige

Textile (Seat)

Black Frame



Black



Cocoa



Gray



Beige

STATEMENT OF LINE



Standard
(LI-04HA-C)



Without Headrest
(LI-04A-C)

CERTIFICATIONS

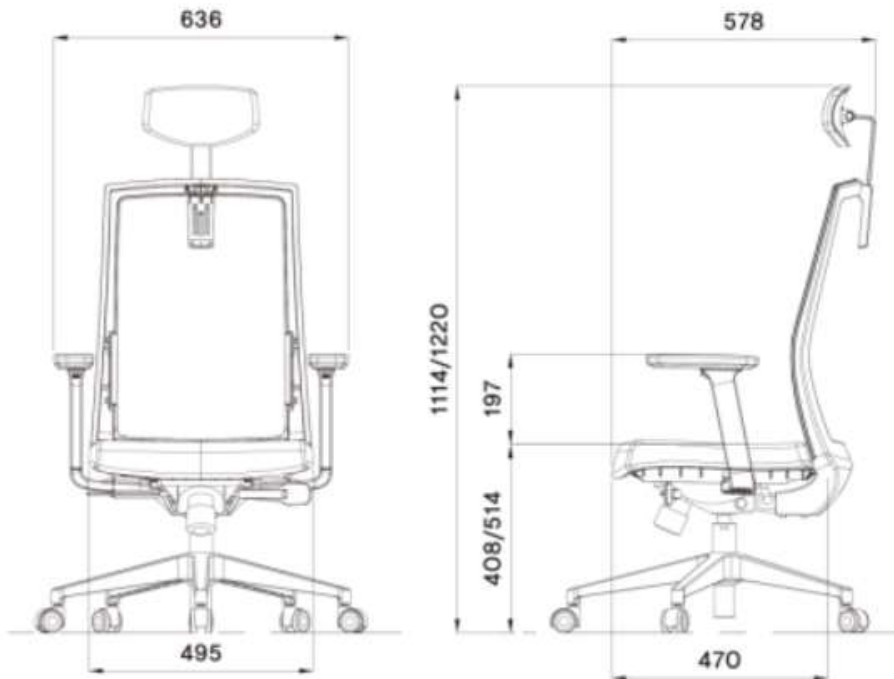
ANSI/BIFMA X5.1-2017
TB117-2013
ISO 14001 & 9001



SPECIFICATIONS

• Net Weight	16.1kg (35.5 lbs)
• Headrest Frame	PA6
• Backrest Frame	PA6
• Cushion Seats	Polyurethane fill
• Seat Pan Frame	PP
• Adj. Armrest	PA6
• Base Materials	PA6
• Casters Materials	PA6 and PU
• Carton Box Size	750*660*415(mm)
• Container Loading Plan	20ft : 129 boxes // 40ft : 267 boxes// 40H : 315 boxes

DIMENSIONS



DUOBACK CO.,LTD

HQ (Factory) : 27, Gajaeul-ro 32beongil, Seo-gu, Incheon, 22829, Korea.
Sales Office : #1002, 41, Digital-ro 31gil, Guro-gu, Seoul, 08375, Korea
T : +82-2-6204-2505 / F : +82-32-816-4817 / duo1350@duoback.co.kr
www.DUOREST.com



SQUARE



Adjustment Guide

Adjustable Headrest

Optional Headrest accessory adjusts 30mm (1.2") vertically.

Mesh Back

Provides dynamic support and allows airflow, providing a comfortable sit in any environment.

Arms

Fixed Arm or Height Adjustable Arm is available.

- Height adjustment range : 70mm (2.75")

Self Tension Tilt Mechanism

Recline back and seat movement featuring a 4:1 back to seat tilt ratio.

- Back reclines 16° from upright position
- Backrest Tilt Lock in Multi positions by lever

Lumbar Support

Lumbar height adjusts within a 60mm (2.4") range to provide additional lower back support.

Seat Slider

Seat depth adjusts within a 60mm (2.4") range to accommodate users of varying leg lengths.

Base

27" (684mm) Five-arm base is available in Black and White.

Casters

Soft dual-wheel casters are 50mm O.D. for use on hard floors. Only available in Black.



FEATURES

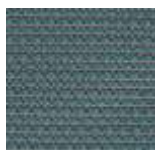
- Mesh Back with Adjustable Lumbar Support
- Self Tension Tilt Mechanism
- Backrest Tilt Lock in Multi positions by lever
- Standard Seat Slider
- Height Adjustable Armrest with PU Pad
- 50mm Hard Floor Casters in Black
- Frame available in Black and White
- Standard 300 lbs. weight capacity

COLORS

Mesh (Back)



Square Mesh
Black



Square Mesh
Blue



Square Mesh
Red



Square Mesh
Grey

Mesh (Seat)



ID102 Black



ID102 Grey

Textile (Seat)



Square Dark
Grey

STATEMENT OF LINE



Standard
(SQ-200C)



Without Headrest
(SQ-250CW)



Mesh seat
(SQ-200M)

CERTIFICATIONS

ANSI/BIFMA X5.1-2017
TB117-2013
ISO 14001 & 9001



SPECIFICATIONS

• Net Weight	15kg (33 lbs)
• Headrest Frame	PA6
• Backrest Frame	PA6
• Lumbar Support	PP
• Cushion Seats	Polyurethane fill
• Seat Pan Frame	PP
• Adj. Armrest	PA6
• Base Materials	PA6
• Casters Materials	PA6 and PU
• Carton Box Size	900*685*380 (mm) / 725*685*380 (mm)
• Container Loading Plan	20ft : 124 chairs / 144 chairs 40ft : 243 chairs / 306 chairs 40H : 285 chairs / 357 chairs

DIMENSIONS



DUOBACK CO.,LTD

HQ (Factory) : 27, Gajaeul-ro 32beongil, Seo-gu, Incheon, 22829, Korea.
 Sales Office : #1002, 41, Digital-ro 31gil, Guro-gu, Seoul, 08375, Korea
 T : +82-2-6204-2505 / F : +82-32-816-4817 / duo1350@duoback.co.kr
www.DUOREST.com



1 Supreme



Adjustable Headrest

adjusts 85mm (3.3") vertically.

- Pivoting range : 70°
adjusts the forward/backward depth in 2 steps.

Arms

Fixed Arm or Height
Adjustable Arm is available.

- Height adjustment
range : 70mm (2.75")

Double Raschel Mesh Back

Provides dynamic support and allows airflow, providing a comfortable sit in any environment.

Flexible elasticity fitting users body curve.

Self Tension Tilt Mechanism

Recline back and seat movement featuring a 4:1 back to seat tilt ratio.

- Back reclines 16° from upright position
- Backrest Tilt Lock in Multi positions by lever

Seat Slider (optional)

Seat depth adjusts within a 60mm (2.4") range to accommodate users of varying leg lengths.

Base

27" (684mm) Five-arm base is available in Black and White.

Casters

Soft dual-wheel casters are 50mm O.D. for use on hard floors.
Only available in Black.



FEATURES

- 3D Adjustable headrest
- Breathable Honeycomb shaped Double Raschel Mesh Back
- Self Tension Tilt Mechanism
- Backrest Tilt Lock in Multi positions by lever
- Seat Depth Adjustable (Optional)
- 50mm Hard Floor Casters in Black
- Frame available in Black and White

COLORS

BLACK FRAME

Back (Mesh)



IR12
Dark Grey



IR12
Blue

Seat (Fabric / Mesh)



Dark Grey



ID102
Black

Headrest (Synthetic Leather)



Black

WHITE FRAME



IR12
Light Gray



IR12
Red



Light Gray



ID102
Light Gray



Light Gray

STATEMENT OF LINE



Armrest Fixed
/
White Frame



Armrest Adjustable
/
Black Frame

CERTIFICATIONS

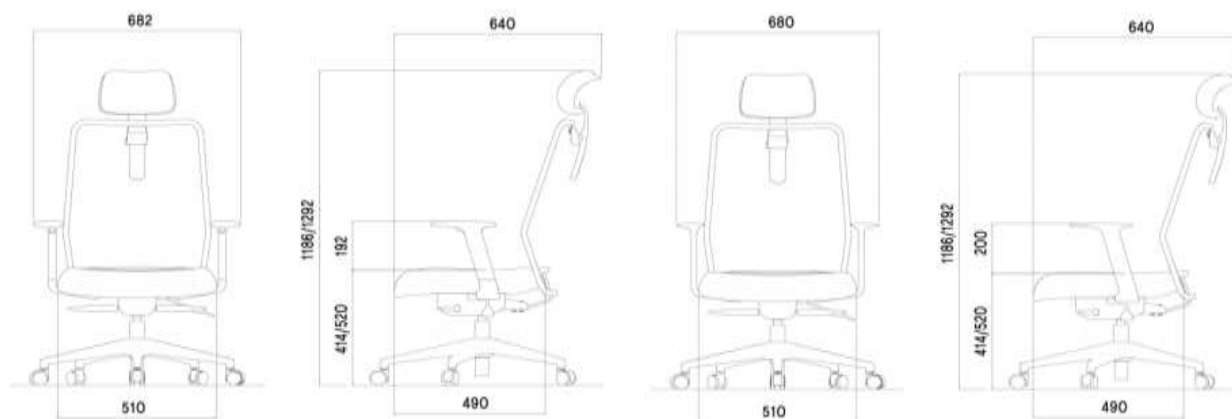
TB117-2013
ISO 14001 & 9001



SPECIFICATIONS

• Net Weight	16.2kg (35.7 lbs)
• Headrest Frame	PU / PA6+GF30%
• Backrest Frame	STEEL / POLYETHYLENE 100%
• Cushion Seats	Polyurethane fill
• Seat Pan Frame	PU / PP
• Armrest (Fixed armrest / Adjustable armrest)	PP+GF15% / PA6+GF30%
• Base Materials	PA6+GF30%
• Casters Materials	PA6+PE
• Carton Box Size	750*660*415 (mm)
• Container Loading Plan	20ft: 129 boxes // 40ft: 267 boxes // 40H: 315 boxes

DIMENSIONS



Height Adjustable Armrest
Seat Slide
Net Weight : 16.2 kg
Gross Weight : 20.5 kg

Height Fixed Armrest
Seat Slide
Net Weight : 16.0 kg
Gross Weight : 20.3 kg

DUOBACK CO.,LTD

HQ (Factory) : 27, Gajaeul-ro 32beongil, Seo-gu, Incheon, 22829, Korea.
Sales Office : #1002, 41, Digital-ro 31gil, Guro-gu, Seoul, 08375, Korea
T : +82-2-6204-2505 / F : +82-32-816-4817 / duo1350@duoback.co.kr
www.DUOREST.com



BRAVO



Adjustable Headrest

Optional Headrest accessory adjusts 40mm (1.6") vertically.

- Pivoting range : 60°

Mesh Back and Seat

Provides dynamic support and allows airflow, providing a comfortable sit in any environment.

- Optional **VETAGEL** seat allows optimal distribution of pressure on the body and excellent temperature and humidity control by applying Multi-layer Honey Comb technology.

Arms

3D arms allow fluid adjustment in three directions :

- Height adjustment range : 60mm (2.4")
- Front-to-back adjustment range : 60mm (2.4")
- Pivoting arm caps : 12° inward and 12° outward

Synchro Tilt Mechanism

Recline with a synchronized back and seat movement featuring a 3:1 back to seat tilt ratio.

3 position multi-lock with built-in safety return feature.

- Back reclines 21° from upright position.

Base

27" (684mm) Five-arm base is available in plastic or polished aluminum.

Flex Back System

Flex Back supports you and responds to your multidimensional movements

Lumbar Support

Lumbar height adjusts within a 95mm (3.7") range to provide additional lower back support.

Die-Casted Frame

Main Frame and Arm Frame connectors are made from Die Casting.

Seat Slider

Seat depth adjusts within a 60mm (2.4") range to accommodate users of varying leg lengths.

Casters

Soft dual-wheel casters are 60mm O.D. for use on hard floors. Only available in Black and White.



FEATURES

- Adjustable headrest with PU Pad
- Mesh Back with Adjustable Lumbar Support
- Synchronized Mechanism with Tension Adjuster from DONATI
- Backrest Tilt Lock in 3 positions by lever
- Flex Back System
- Standard Seat Slider
- 3-way Adjustable Armrest
- Die-Casted Frame for Seat and Arm connectors
- 60mm Hoodless Hard Floor Casters in Black
- Frame available in Black and White
- Base available in Black, White and Polished Aluminum
- Standard 300 lbs. weight capacity

Textile

Black Frame

White Frame

Mesh (Back & Seat)



Mesh Black
(I103BK)



Mesh L.Gray
(I103LG)



Mesh Beige
(I103BI)

Fabric (Seat)



EK34 Black
(E34BK)



EK34 L.Gray
(E34GYL)



EK34 Beige
(E34BI)

Seat (VETAGEL)



Air mesh Black
(F14BK)



Air mesh green
(F14GN)

STATEMENT OF LINE



Mesh seat



Sponge seat
without headrest



Mesh seat
White frame



Vetagel seat
White frame

CERTIFICATIONS

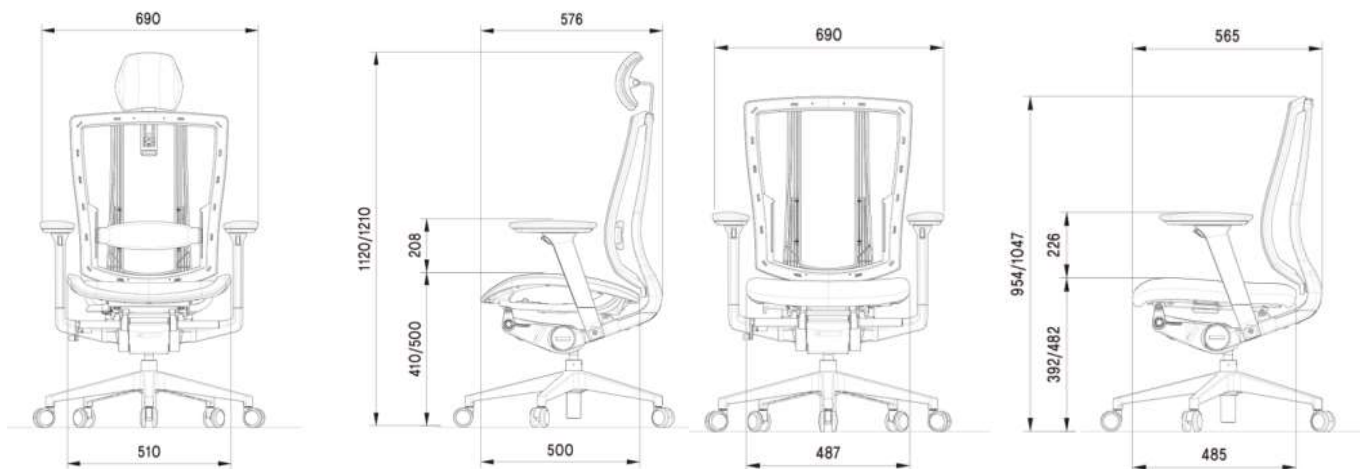
ANSI/BIFMA X5.1-2017
ISO 14001 & 9001



SPECIFICATIONS

• Net Weight	20.1kg (44.3 lbs)
• Headrest Frame (Post)	PU/PP+GF30% (PA6+GF30%)
• Backrest Frame	PA6+GF30% / PP
• Lumbar Support	PA6 and PU
• Cushion Seats	Polyurethane fill
• Seat Pan Frame	PA6+GF30%
• Adj. Armrest	PA6
• Base Materials	PA6+GF30%
• Casters Materials	PA6 and PU
• Carton Box Size	710*660*450(mm)
• Container Loading Plan	20ft : 128 boxes // 40ft : 271 boxes // 40H : 304 boxes

DIMENSIONS



BR-200M : net weight 20.1Kg, gross weight 22.3Kg

BR-050C : net weight 18.2Kg, gross weight 20.4Kg

DUOBACK CO.,LTD

HQ (Factory) : 27, Gajaeul-ro 32beongil, Seo-gu, Incheon, 22829, Korea.
Sales Office : #1002, 41, Digital-ro 31gil, Guro-gu, Seoul, 08375, Korea
T : +82-2-6204-2505 / F : +82-32-816-4817 / DUO1350@duoback.co.kr
www.DUOREST.com



BRAVO PREMIUM



Multi-Dimensional Adjustable Headrest

Optional Headrest accessory adjusts 85mm (3.3") vertically.

- Pivoting range : 70°
- Depth adj. range : 22°

Flex Back System

Flex Back supports you and responds to your multidimensional movements.

Mesh Back and Seat

Provides dynamic support and allows airflow, providing a comfortable sit in any environment.

Larger and Thicker Lumbar Support

Lumbar height adjusts within a 95mm (3.7") range to provide additional lower back support.

Die-Casted Frame

Main Frame and Arm Frame connectors are made from Die Casting.

Seat Slider

Seat depth adjusts within a 60mm (2.4") range to accommodate users of varying leg lengths.

Synchro Tilt Mechanism

Recline with a synchronized back and seat movement featuring a 3:1 back to seat tilt ratio.

4 position multi-lock with built-in safety return feature.

- Back reclines 21° from upright position.

Base

27" (684mm) Five-arm base is available in plastic or polished aluminum.

Casters

Soft dual-wheel casters are 60mm O.D. for use on hard floors. Only available in Black and White.

Arms

3D arms allow fluid adjustment in three directions :

- Height adjustment range : 60mm (2.4")
- Front-to-back adjustment range : 60mm (2.4")
- Pivoting arm caps : 12° inward and 12° outward



FEATURES

- Adjustable headrest with PU Pad
- Mesh Back with Adjustable Lumbar Support
- Synchronized Mechanism with Tension Adjuster from DONATI
- Backrest Tilt Lock in 4 positions by lever
- Flex Back System
- Standard Seat Slider
- 3-way Adjustable Armrest
- Die-Casted Frame for Seat and Arm connectors
- 60mm Hoodless Hard Floor Casters in Black
- Frame available in Black and White
- Base available in Black, White and Polished Aluminum
- Standard 300 lbs. weight capacity

COLORS

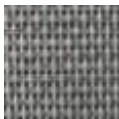
Black Frame

White Frame

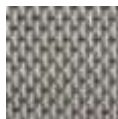
Mesh (Back & Seat)



Mesh Black
(I103BK)



Mesh L.Gray
(I103LG)



Mesh Beige
(I103BI)

Fabric (Seat)



EK34 Black
(E34BK)



EK34 L.Gray
(E34GYL)



EK34 Beige
(E34BI)

STATEMENT OF LINE



BRP-200C
Sponge seat



BRP-200M
Mesh seat

CERTIFICATIONS

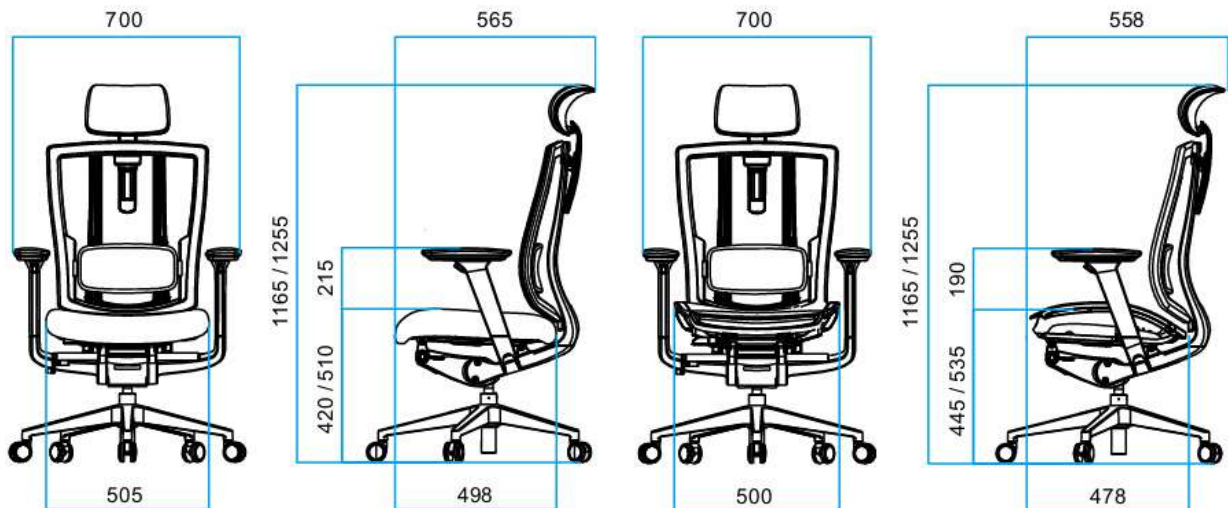
ANSI/BIFMA X5.1-2017
ISO 14001 & 9001



SPECIFICATIONS

• Net Weight	18.6kg (41 lbs)
• Headrest Frame (Post)	PU/PP+GF30% (PA6+GF30%)
• Backrest Frame	PA6+GF30% / PP
• Lumbar Support	PA6 and PU
• Cushion Seats	Polyurethane fill
• Seat Pan Frame	PA6+GF30%
• Adj. Armrest	PA6
• Base Materials	PA6+GF30%
• Casters Materials	PA6 and PU
• Carton Box Size	710*660*450(mm)
• Container Loading Plan	20ft : 129 boxes // 40ft : 271 boxes // 40H : 304 boxes

DIMENSIONS



BRP-200C : net weight 18.6Kg, gross weight 21.6Kg

BRP-200M : net weight 19.5Kg, gross weight 22.6Kg

DUOBACK CO.,LTD

HQ (Factory) : 27, Gajaeul-ro 32beongil, Seo-gu, Incheon, 22829, Korea.
Sales Office : #1002, 41, Digital-ro 31gil, Guro-gu, Seoul, 08375, Korea
T : +82-2-6204-2505 / F : +82-32-816-4817 / DUO1350@duoback.co.kr
www.DUOREST.com



MEGA



Adjustable Headrest

Optional Headrest accessory adjusts its Angle, Height and Depth

- Angle range: 70°
- 85mm of vertical adjustment
- Depth adjustable to forward from the upright position

Arms

3D arms allow fluid adjustment in three directions :

- Height adjustment range : 60mm (2.4")
- Front-to-back adjustment range : 60mm (2.4")
- Pivoting arm caps : 12° inward and 12° outward

Synchro Tilt Mechanism

Recline with a synchronized back and seat movement featuring a 3:1 back to seat tilt ratio.

3 position multi-lock with built-in safety return feature.

- Back reclines 21° from upright position.

Base

27" (684mm) Five-arm base is available in plastic or polished aluminum.

Mesh Back and Seat

Provides dynamic support and allows airflow, providing a comfortable sit in any environment.

Lumbar Support

Lumbar height adjusts within a 26mm (1.1") range to provide additional lower back support.

Die-Casted Frame

Main Frame and Arm Frame connectors are made from Die Casting.
(Polished finish available)

Seat Slider

Seat depth adjusts within a 60mm (2.4") range to accommodate users of varying leg lengths.

Casters

Soft dual-wheel casters are 60mm O.D. for use on hard floors. Only available in Black and White.



FEATURES

- 3-way Adjustable headrest with PU Pad
- Mesh Back with Adjustable Lumbar Support
- Synchronized Mechanism with Tension Adjuster from DONATI
- Backrest Tilt Lock in 3 positions by lever
- 4 different seat types (Mesh, Sponge, Latex, Vetagel) with Standard Seat Slider
- 3-way Adjustable Armrest
- Die-Casted Frame for Seat and Arm connectors (Polished finish available)
- 60mm Hoodless Hard Floor Casters in Black
- Frame available in Black and White
- Base available in Black, White and Polished Aluminum
- Standard 300 lbs. weight capacity

COLORS

Mesh (Back)



IR27Black IR27Green IR27Red IR27Gray IR27Blue

Fabric (Seat)

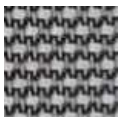


EK34 Black EK34 Green EK34 Red EK34 M.Gray EK34 Blue

Mesh (Seat)



ID102
Black

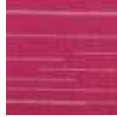


ID102
L.Gray

Latex (seat)

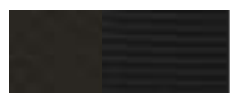


Bamboo Blue
(F41BE)



Bamboo Red
(F41RD)

Vetagel (seat)



Air Mesh Black
(F14BK)



Air Mesh Green
(F14GN)

STATEMENT OF LINE



MG-S-C1
Sponge seat



MG-S-M1
Mesh seat



MG-S-T1
Latex seat



MG-S-V1
Vetagel seat

CERTIFICATIONS

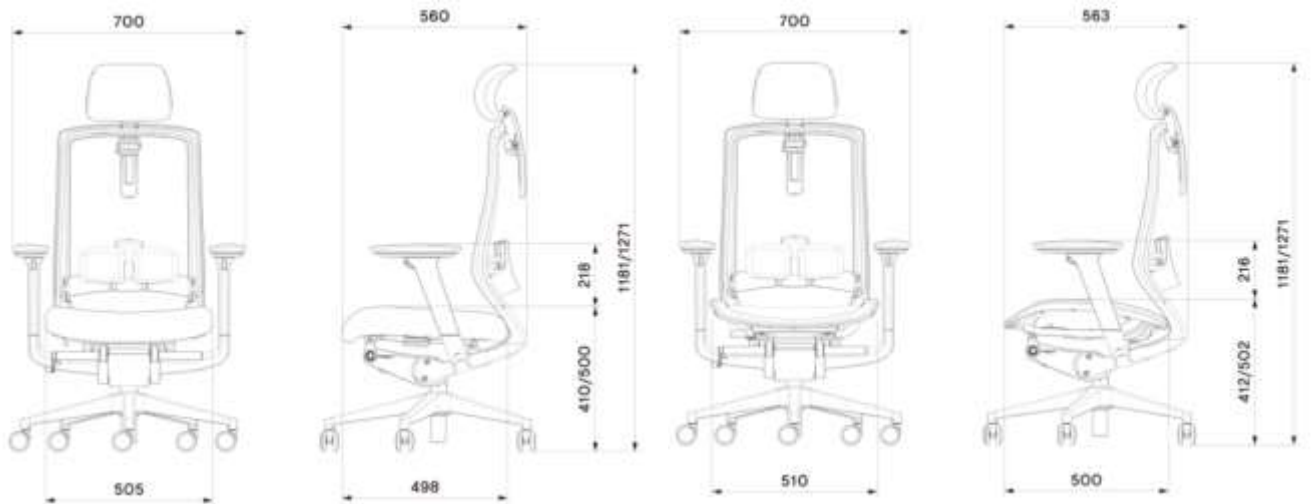
ANSI/BIFMA X5.1-2017
ISO 14001 & 9001



SPECIFICATIONS

• Net Weight	17.9kg (39.5 lbs)
• Headrest Frame (Post)	PU/PA6+GF30%
• Backrest Frame	PA6+GF30%
• Lumbar Support	PP + ISF (Integral Skin Foam)
• Cushion Seats	Polyurethane fill
• Seat Pan Frame	PP
• Adj. Armrest	PA6+GF30%
• Base Materials	PA6+GF30%
• Casters Materials	PA6 and PE
• Carton Box Size	710*660*450(mm)
• Container Loading Plan	20ft : 128 boxes // 40ft : 271 boxes // 40H : 304 boxes

DIMENSIONS



MG-S-C1 : net weight 17.9Kg, gross weight 23.5Kg

MG-S-M1 : net weight 18.9Kg, gross weight 24.6Kg

DUOBACK CO.,LTD

HQ (Factory) : 27, Gajaeul-ro 32beongil, Seo-gu, Incheon, 22829, Korea.
 Sales Office : #1002, 41, Digital-ro 31gil, Guro-gu, Seoul, 08375, Korea
 T : +82-2-6204-2505 / F : +82-32-816-4817 / DUO1350@duoback.co.kr
www.DUOREST.com



D3



Adjustable Headrest

Optional Headrest accessory adjusts 85mm (3.3") vertically.

Arms

2D arms allow fluid adjustment in three directions :

- Height adjustment range : 70mm (2.76")
- Front-to-back adjustment range : 40mm (1.57").

Synchro Tilt Mechanism

Recline with a synchro back and seat movement featuring a 2.4:1 back to seat tilt ratio.

4 position multi-lock with built-in safety return feature.

- Back reclines 22° from upright position.

Mesh Back

Provides dynamic support and allows airflow, providing a comfortable sit in any environment.

DUO Lumbar Support

New style of lumbar support implements as similar as DUOREST® System.

Newly interpreted DUO lumbar support reduces fatigue, support the left and right of the lumbar spine and alleviates back pains associated with long sitting.

Seat Slider

Seat depth adjusts within a 50mm (2.0") range to accommodate users of varying leg lengths.

Base

684mm (27") Five-arm base is available in Black and White.

Casters

Soft dual-wheel casters are 60mm (2.36") O.D. for use on hard floors. Available in Black and White.



FEATURES

- Ergonomic DUO lumbar support.
- Synchronized Mechanism with Tension Adjuster from DONATI
- Backrest Tilt Lock in 4 positions by lever
- Standard Seat Slider
- 2-way Adjustable Armrest
- 60mm Hoodless Hard Floor Casters in Black and White
- Frame available in Black and White
- Base available in Black and White
- Standard 300 lbs. weight capacity

COLORS

Mesh (Backrest)

- For Black Frame



KATE BLACK
(M45BK)



KATE GRAY
(M45GY)



KATE RED
(M45RD)



KATE PEACOCK
(M45PB)

- For White Frame



KATE SKY
(M45SB)



KATE TAUPE
(M45TA)

Fabric (Seat)

- For Black Frame



WT BLACK
(F51BK)



WT GRAY
(F51GY)



WT RED
(F51RD)



WT PEACOCK
(F51PB)

- For White Frame



WT SKY
(F51SB)



WT TAUPE
(F51TA)

Syn. leather (Headrest)

- For Black Frame



BLACK

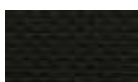
- For White Frame



LIGHT GRAY

Mesh (Seat)

- For Black Frame



ID102-BLACK

- For White Frame



ID102-LIGHT GRAY

STATEMENT OF LINE



D3-HS



D3-HSW



D3-HM



D3-HMW

CERTIFICATIONS

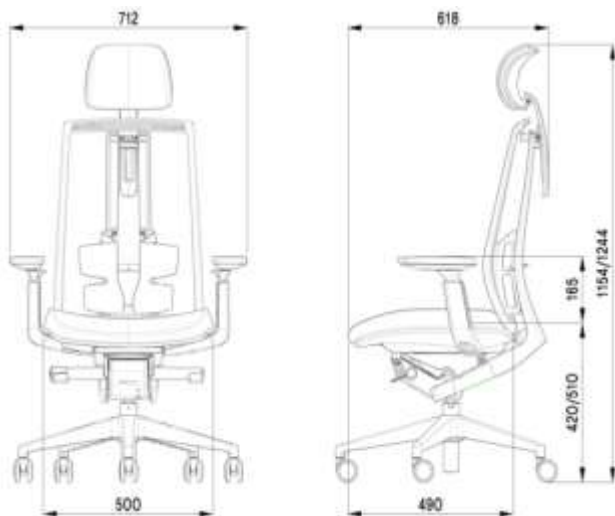
ANSI/BIFMA X5.1-2017
ISO 14001 & 9001



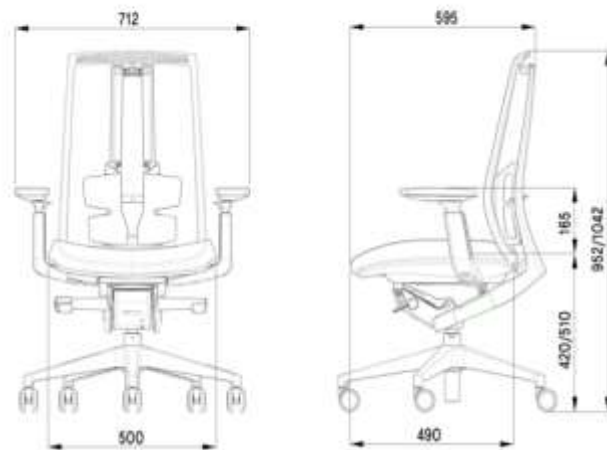
SPECIFICATIONS

• Net Weight (Fabric / Mesh)	16.6 kg (36.6 lbs) / 15.8 kg (34.8 lbs)
• Headrest Frame	PA6+GF30%
• Backrest Frame	PA6+GF30%
• Cushion Seat	Polyurethane fill
• Seat Pan Frame	PP or PU
• Adj. Armrest	PA6+GF30%
• Base Materials	PA6+GF30%
• Casters Materials	PA6+PE
• Carton Box Size	720*660*610 (mm)
• Container Loading Plan	20ft : 81 boxes // 40ft : 162 boxes // 40H : 213 boxes

DIMENSIONS



D3-HS : net weight 16.6Kg, gross weight 21.24Kg



D3-S : net weight 15.8Kg, gross weight : 20.44Kg

DUOBACK CO.,LTD

HQ (Factory) : 27, Gajaeul-ro 32beongil, Seo-gu, Incheon, 22829, Korea.
 Sales Office : #1002, 41, Digital-ro 31gil, Guro-gu, Seoul, 08375, Korea
 T : +82-2-6204-2505 / F : +82-32-816-4817 / DUO1350@duoback.co.kr
 www.DUOREST.com





Adjustable Headrest

- Headrest adjusts 49mm (1.9") vertically.
- Pivoting range : 56°

Arms

3D arms allow fluid adjustment in three directions :

- Height adjustment range : 72mm(2.8")
- Front-to-back adjustment range : 40mm (1.6")
- Pivoting arm caps : 17° inward and 17° outward

Weight-activated Synchronized Mechanism

Auto-Balance tension adjustment utilizes the weight of the user to balance resistance of the back.

3:1 back to seat synchronous movement with 3 position back lock.

- Back reclines 18° from upright position.

Mesh Back

Provides dynamic support and allows airflow, providing a comfortable sit in any environment.

Lumbar Support

Lumbar height adjusts within a 65mm(2.5") range to provide additional lower back support..

Seat Slider

Seat depth adjusts within a 50mm (1.9") range to accommodate users of varying leg lengths.

Base

27" (688mm) Five-arm base is available in Black and White.

Casters

Soft dual-wheel casters are 50mm O.D. for use on hard floors. Only available in Black.



FEATURES

- Adjustable headrest with PU Pad
- Mesh Back with Adjustable Lumbar Support
- Weight-activated Synchronized Mechanism from DONATI
- Backrest Tilt Lock in 3 positions by lever
- Standard Seat Slider
- Adjustable Armrest with PU Pad
- 50mm Hoodless Hard Floor Casters in Black
- Frame available in Black and White
- Base available in Black and White
- Standard 300 lbs. weight capacity

COLORS

BLACK FRAME

Back (Mesh)



ID50 Black
(ID50BK)



ID50 Grey
(ID50GY)



ID50 Blue
(ID50BU)



ID50 Orange
(ID50OR)

WHITE FRAME



ID50 Grey
(ID50GY)



ID50 Blue
(ID50BU)



ID50 Orange
(ID50OR)

Seat (Fabric)



EK21 Black



EK21 Grey



EK21 Blue



EK21 Orange



EK21 Grey



EK21 Orange



EK21 Blue

Seat (Mesh)



ID102-BLACK



ID102-LIGHT GRAY

STATEMENT OF LINE



Standard
(Q5W)



Without Headrest
(Q5B)



Mesh seat
(Q5MWB)

CERTIFICATIONS

ANSI/BIFMA X5.1-2017
TB117-2013
ISO 14001 & 9001



SPECIFICATIONS

• Net Weight (mesh)	16kg (35.3 lbs)
• Headrest Frame	PU / PA6+GF30%
• Backrest Frame	PA6+GF30%
• Lumbar Support	PU+PA6
• Cushion Seats	Polyurethane fill
• Seat Pan Frame	PU / PP
• Adj. Armrest	PA6+GF30%
• Base Materials	PA6+GF30%
• Casters Materials	PA6+PE
• Carton Box Size	680*360*680(mm)
• Container Loading Plan	20ft : 153 boxes // 40ft : 306 boxes // 40H : 357 boxes

DIMENSIONS



DUOBACK CO.,LTD

HQ (Factory) : 27, Gajaeul-ro 32beongil, Seo-gu, Incheon, 22829, Korea.
 Sales Office : #1002, 41, Digital-ro 31gil, Guro-gu, Seoul, 08375, Korea
 T : +82-2-6204-2505 / F : +82-32-816-4817 / DUO1350@duoback.co.kr
www.DUOREST.com





Adjustment Guide

 **DUOREST®**

Adjustable Headrest

Headrest adjusts 55mm (2.2") vertically.

- Pivoting range : 9.5°

Mesh Back

Provides dynamic support and allows airflow, providing a comfortable sit in any environment.

Seat

Seat Cover is removable for washing.

- Detachable and replaceable with the SMART SEAT based on Sensor Technology.
- Detachable and replaceable with the **VETAGEL** seat allow optimal distribution of pressure on the body by applying Multi-layer Honey Comb technology.

Weight-activated Synchronized Mechanism

Auto-Balance tension adjustment utilizes the weight of the user to balance resistance of the back.

3:1 back to seat synchronous movement with 3 position back lock.

Back reclines 18° from upright position.



Arms

3D arms allow fluid adjustment in three directions :

- Height adjustment range : 68mm(2.6")
- Front-to-back adjustment range : 40mm (1.6")
- Pivoting arm caps : 15° inward and 15° outward

Lumbar Support

Lumbar height adjusts within a 50mm (2") range to provide additional lower back support.

Seat Slider

Seat depth adjusts within a 50mm (2") range to accommodate users of varying leg lengths.

Base

27" (688mm) Five-arm base is available in plastic or polished aluminum.

Casters

Soft dual-wheel casters are 65mm O.D. for use on hard floors. Only available in Black.

FEATURES

- Adjustable headrest with PU Pad
- Mesh Back with Adjustable Lumbar Support
- Weight-activated Synchronized Mechanism from DONATI
- Backrest Tilt Lock in 3 positions by lever
- Standard Seat Slider
- Detachable seat and Removable Seat Cover
- 3-way Adjustable Armrest
- 65mm Hoodless Hard Floor Casters in Black
- Frame available in Black and White
- Base available in Black and White
- Standard 300 lbs. weight capacity
- GREENGUARD GOLD certified

Textile

Black Frame

Seat(Fabric)



Ash Black



Ash Gray

Back(Mesh)



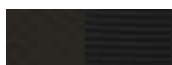
Ash Mesh Black

Seat(Mesh)



Black
(I102BK)

Vetagel (Seat)



Air mesh Black

White Frame



Ash Blue



Ash Red



Ash Mesh Grey



D.Gray
(I102DG)



Air mesh Green

STATEMENT OF LINE



Standard



Without Headrest



Mesh seat



Vetagel seat

CERTIFICATIONS

ANSI/BIFMA X5.1-2017

TB117-2013

GREENGUARD Gold

ISO 14001 & 9001



SPECIFICATIONS

• Net Weight (mesh)	15.9kg (35 lbs)
• Headrest Frame	PA6
• Backrest Frame	PA6
• Lumbar Support	PC
• Cushion Seats	Polyurethane fill
• Seat Pan Frame	PP
• Adj. Armrest	PA6
• Base Materials	PA6
• Casters Materials	PA6 and PU
• Carton Box Size	750*660*415(mm)
• Container Loading Plan	20ft : 131 boxes // 40ft : 270 boxes // 40H : 324 boxes

DIMENSIONS



DUOBACK CO.,LTD

HQ (Factory) : 27, Gajaeul-ro 32beongil, Seo-gu, Incheon, 22829, Korea.
 Sales Office : #1002, 41, Digital-ro 31gil, Guro-gu, Seoul, 08375, Korea
 T : +82-2-6204-2505 / F : +82-32-816-4817 / DUO1350@duoback.co.kr
www.DUOREST.com



 7⁺PLUS



 DUOREST®

Adjustable Headrest

Headrest adjusts 55mm (2.2") vertically.

- Pivoting range : 9.5°

Arms

3D arms allow fluid adjustment in three directions :

- Height adjustment range : 70mm(2.8")
- Front-to-back adjustment range : 45mm (1.8")
- Pivoting arm caps : 22° inward and 22° outward

Lumbar Support

Lumbar height adjusts within a 50mm (2") range to provide additional lower back support.

Synchro Tilt Mechanism

Recline with a synchro back and seat movement featuring a 2.4:1 back to seat tilt ratio.

4 position multi-lock with built-in safety return feature.

- Back reclines 22° from upright position

Mesh Back

Provides dynamic support and allows airflow, providing a comfortable sit in any environment.

Die-Casted Frame

Main Frame and Arm Frame connectors are made from Die Casting.

Seat Slider

Seat depth adjusts within a 50mm (2") range to accommodate users of varying leg lengths.



Base

27" (684mm) Five-arm base is available in polished aluminum.

Casters

Soft dual-wheel casters are 60mm O.D. for use on hard floors. Only available in Black.

FEATURES

- Adjustable headrest with PU Pad
- Mesh Back with Adjustable Lumbar Support
- Synchronized Mechanism with Tension Adjuster from DONATI
- Backrest Tilt Lock in 5 positions by lever
- Standard Seat Slider
- Die-Casted Frame for Seat and Backrest
- 3-way Adjustable Armrest
- 60mm Hoodless Hard Floor Casters in Black
- Frame available in Black and White
- Base available in Polished Aluminum.
- Standard 300 lbs. weight capacity

COLORS

Mesh (Back)



Ash Mesh Black
(7AMB1)



Ash Mesh Grey
(7AMG1)

Textile (Seat)



Ash Black
(7ASB1)



Ash Gray
(7ASG1)



Ash Blue
(7ASE1)



Ash Red
(7ASR1)

STATEMENT OF LINE



Standard
(Q700C)



Without Headrest
(Q750C)

CERTIFICATIONS

ANSI/BIFMA X5.1-2017
TB117-2013
ISO 14001 & 9001



SPECIFICATIONS

• Net Weight (mesh)	18.5kg (40.8 lbs)
• Headrest Frame	PA6
• Backrest Frame	PA6
• Lumbar Support	PU
• Cushion Seats	Polyurethane fill
• Seat Pan Frame	PP
• Adj. Armrest	PA6
• Base Materials	AL
• Casters Materials	PA6 and PU
• Carton Box Size	710*660*450(mm)
• Container Loading Plan	20ft : 129 Boxes // 40ft : 271 boxes // 40H : 304 boxes

DIMENSIONS



DUOBACK CO.,LTD

HQ (Factory) : 27, Gajaeul-ro 32beongil, Seo-gu, Incheon, 22829, Korea.
Sales Office : #1002, 41, Digital-ro 31gil, Guro-gu, Seoul, 08375, Korea
T : +82-2-6204-2505 / F : +82-32-816-4817 / DUO1350@duoback.co.kr
www.DUOREST.com





Mesh Back

Provides dynamic support and allows airflow, providing a comfortable sit in any environment.

Arms

Comfort Stationary
Nylon Armrest

Seat Pad

Provides a comfortable sit in any environment.

*Thickness : 25mm(0.9")

Single-piece shell

Provides a natural cradle.

Casters

Soft dual-wheel casters are 60mm O.D. for use on hard floors. Only available in Black and two-tone White.

**Nesting Mechanism**

Allows chairs to be nested together and maximized for space saving.



FEATURES

- Multi-purpose Nesting chair
- Mesh Back
- Perfect for collaborative, meeting, conference and break space rooms or cafeterias
- Single-piece shell provides a natural cradle
- Nesting Mechanism allows chairs to be nested together
- Comfort Stationary Nylon Armrest
- Seat Pad (or Without Seat Pad)
- 60mm Hoodless Hard Floor Casters in Black and two-tone White
- Frame available in Black and White

COLORS

Mesh (Back)



Q6 Mesh
Grey
(M44DG)



Q6 Mesh
Light Grey
(M44LG)



Q6 Mesh
Blue
(M44BU)



Q6 Mesh
Red
(M44RD)

Textile (Seat Pad)



Q6 Grey
(F44DG)



Q6 Light Grey
(F44LG)



Q6 Blue
(F44BU)



Q6 Red
(F44RD)

STATEMENT OF LINE



Standard
(Q61N)



White Frame
(Q6W1N)



Swivel
(Q61S)



4Leg
(Q6W1L)

CERTIFICATIONS

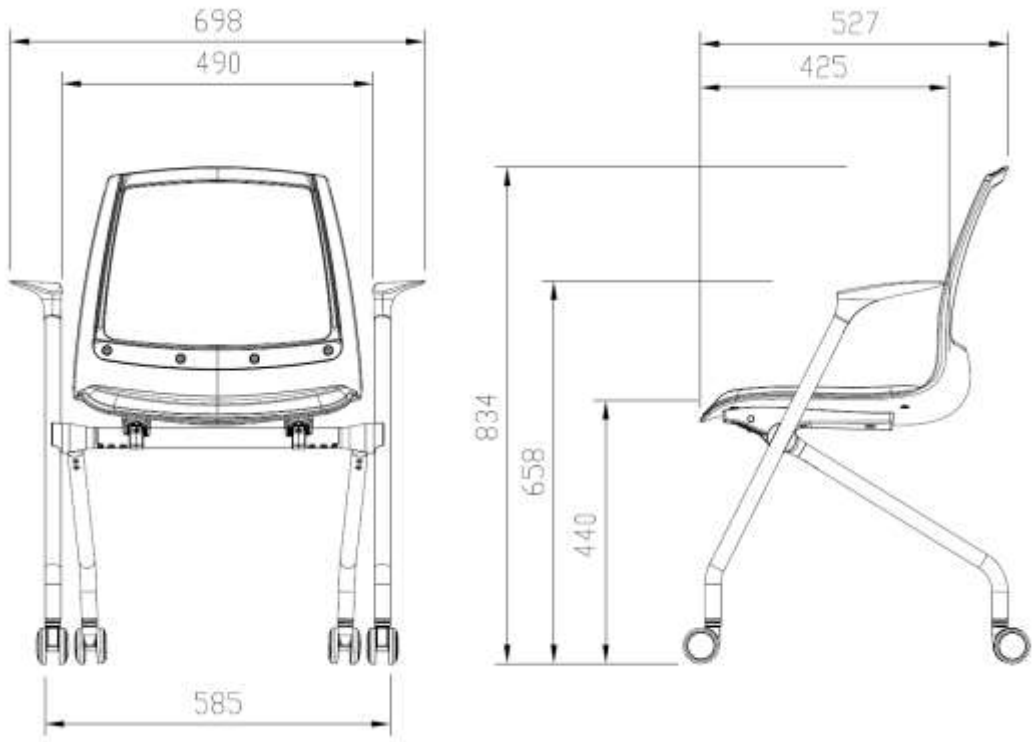
TB117-2013
ISO 14001 & 9001



SPECIFICATIONS

• Net Weight (mesh)	9.49kg (21.9 lbs)
• Body Shell	PA6
• Cushion Seats	Polyurethane fill
• Seat Pan Frame	PP
• Armrest	PA6
• Shell Bracket	PA6
• Frame	AL and STEEL
• Casters Materials	PA6 and PU
• Carton Box Size	720*600*630(mm)
• Container Loading Plan	20ft : 81 boxes // 40ft : 180 boxes // 40H : 240 boxes

DIMENSIONS



DUOBACK CO.,LTD

HQ (Factory) : 27, Gajaeul-ro 32beongil, Seo-gu, Incheon, 22829, Korea.
 Sales Office : #1002, 41, Digital-ro 31gil, Guro-gu, Seoul, 08375, Korea
 T : +82-2-6204-2505 / F : +82-32-816-4817 / duo1350@duoback.co.kr
www.DUOREST.com





Tablet

Rotating tablet provides a comfortable seating and study environment

Seat Pad

Provides a comfortable sit in any environment.
*Thickness : 12mm(0.4")

Single-piece shell

Provides a natural cradle.

Casters

Soft dual-wheel casters are 60mm O.D. for use on hard floors. Only available in Black and two-tone White.

Nesting Mechanism

Allows chairs to be nested together and maximized for space saving.



FEATURES

- Multi-purpose Nesting chair
- Perfect for collaborative, meeting, conference and break space rooms or cafeterias
- Single-piece shell provides a natural cradle
- Nesting Mechanism allows chairs to be nested together
- Seat Pad
- 60mm Hoodless Hard Floor Casters in Black and two-tone White
- Frame available in Black and White

COLORS

Black Frame



EK34-J02
(Black)



EK34-N05
(Green)



EK34-R04
(Red)

White Frame



EK34-G03
(Light Gray)



EK34-N05
(Green)



EK34-R04
(Red)

STATEMENT OF LINE



QL61N
Nesting



QL6W1A
Armless



QL61L
4Leg



QL6W1S
Swivel

CERTIFICATIONS

TB117-2013
ISO 14001 & 9001



QL61W
Wooden Leg

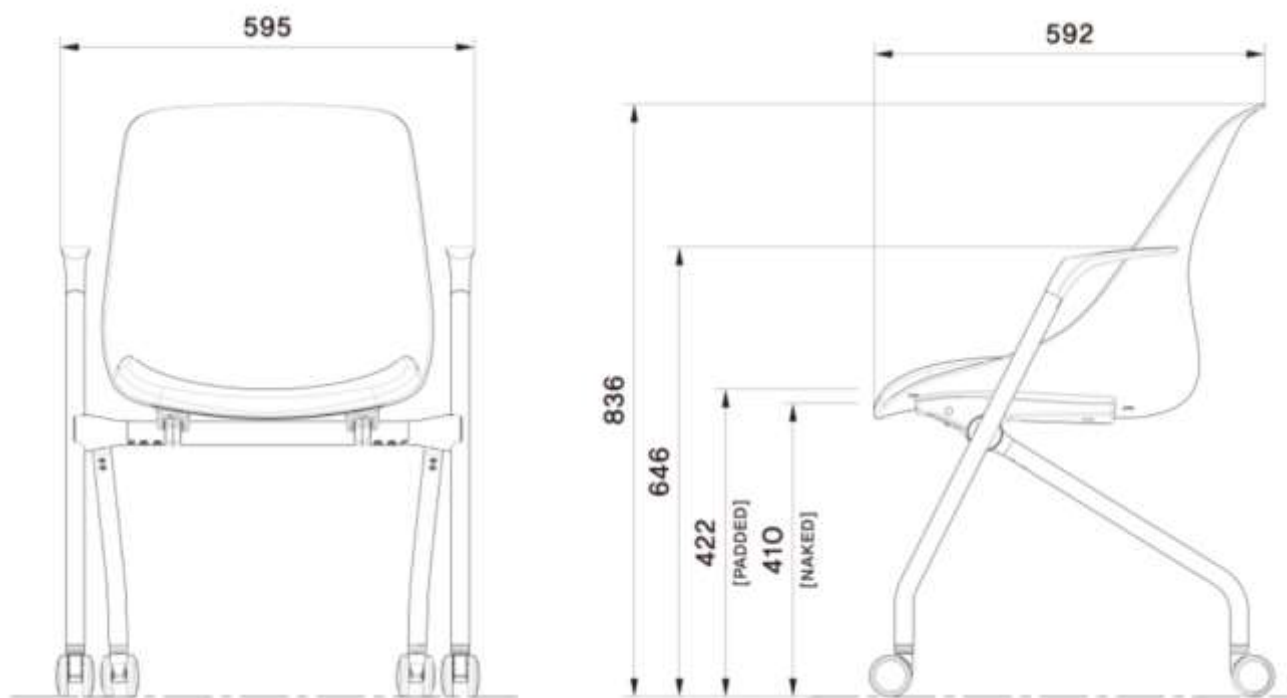


QL6W1T2F
Tablet

SPECIFICATIONS

• Net Weight	9.7kg (13.56 kg including carton)
• Tablet (Optional)	ABS
• Cushion Seats	Polyurethane fill (15T)
• Seat Pan Frame	PP+GF20%
• Shell Bracket	PA6+GF30%
• Frame	STEEL
• Casters Materials	PA6 +PE
• Carton Box Size	635*600*770(mm)
• Container Loading Plan	20ft : 81 boxes // 40ft : 180 boxes // 40H : 240 boxes

DIMENSIONS



DUOBACK CO.,LTD

HQ (Factory) : 27, Gajaeul-ro 32beongil, Seo-gu, Incheon, 22829, Korea.
 Sales Office : #1002, 41, Digital-ro 31gil, Guro-gu, Seoul, 08375, Korea
 T : +82-2-6204-2505 / F : +82-32-816-4817 / DUO1350@duoback.co.kr
www.DUOREST.com



QA6



**Optional tablet and
Backrest pad**

Optional Rotating tablet
and backrest pad

Single-piece shell

Provides a natural cradle.

Seat Pad

Provides a comfortable
sit in any environment.

*Thickness : 15mm(0.6")

Fixed armrest

Comfortable Stationary
Armrest

Casters

Soft dual-wheel casters are
60mm O.D. for use on hard
floors. Only available in
Black and two-tone White.

Nesting Mechanism

Allows chairs to be nested
together and maximized for
space saving.



FEATURES

- Multi-purpose Nesting chair
- Perfect for collaborative, meeting, conference and break space rooms or cafeterias
- Single-piece shell provides a natural cradle
- Comfort Stationary Nylon Armrest
- Nesting Mechanism allows chairs to be nested together
- Optional Rotating tablet, backrest pad & seat Pad
- 60mm Hoodless Hard Floor Casters in Black and two-tone White
- Frame available in Black and White

COLORS

Black Frame



EK34-J02
(Black)



EK34-N05
(Green)



EK34-R04
(Red)

White Frame



EK34-G03
(Light Gray)



EK34-N05
(Green)



EK34-R04
(Red)

STATEMENT OF LINE



QA6-1A



QA6W-1L



QA6-1AP



QA6W-1T

CERTIFICATIONS

ISO 14001 & 9001

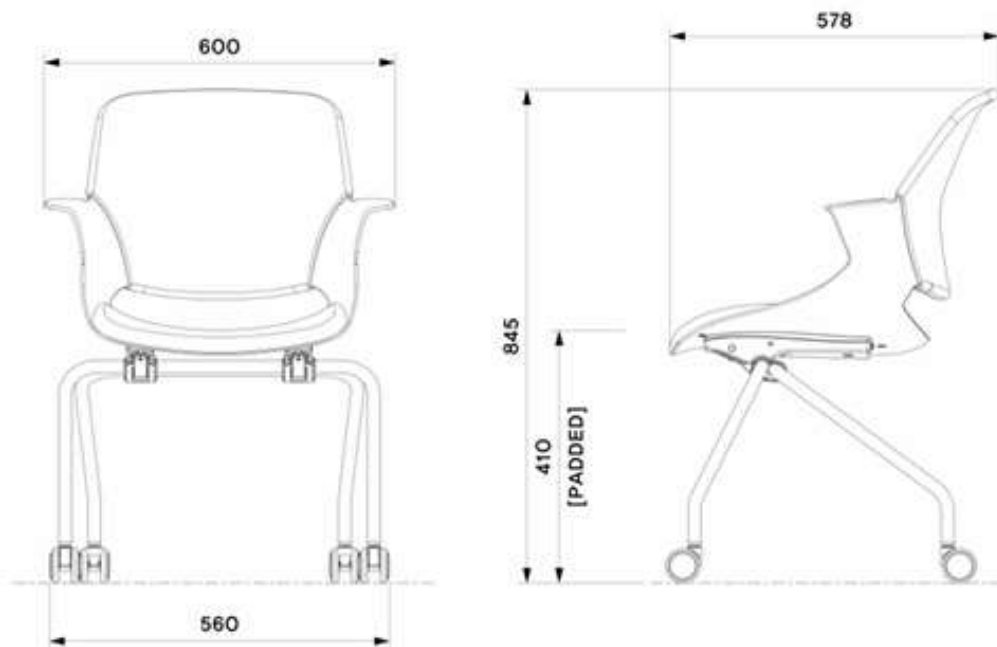


QA6-1S

SPECIFICATIONS

• Net Weight	6.6kg (9.5 kg including carton)
• Tablet (Optional)	ABS
• Cushion Seats	Polyurethane fill (15T)
• Main shell / seatpan inner shell	PP+GF20% / PP
• Shell Bracket	PA6+GF30%
• Frame	STEEL
• Casters Materials	PA6 +PE
• Carton Box Size	620*600*485(mm)
• Container Loading Plan	20ft : 81 boxes // 40ft : 180 boxes // 40H : 240 boxes

DIMENSIONS



QA6-1A : 6.6 Kg (net) / 9.5 Kg (Gross)

DUOBACK CO.,LTD

HQ (Factory) : 27, Gajaeul-ro 32beongil, Seo-gu, Incheon, 22829, Korea.
 Sales Office : #1002, 41, Digital-ro 31gil, Guro-gu, Seoul, 08375, Korea
 T : +82-2-6204-2505 / F : +82-32-816-4817 / DUO1350@duoback.co.kr
www.DUOREST.com



Q4



Arms

Comfort Stationary
Nylon Armrest

Mesh Back

Provides dynamic support and allows airflow, providing a comfortable sit in any environment. (12 degrees of backrest tilting)

Foldable seat

Seat foldable for the space efficiency.

Casters

Soft dual-wheel casters are 60mm O.D. for use on hard floors. Only available in Black and two-tone White.

Nesting Mechanism

Allows chairs to be nested together and maximized for space saving.



FEATURES

- Multi-purpose chair
- Tilted mesh Back
- Perfect for collaborative, meeting, conference and break space rooms or cafeterias
- Nesting Mechanism allows chairs to be nested together
- Comfort Stationary Nylon Armrest
- Foldable seat
- 60mm Hoodless Hard Floor Casters in Black and two-tone White
- Frame available in Black and White

COLORS

Mesh (Back)



IR12 Blue
(M47BE)



IR12 Red
(M47RD)



IR12 Dark Gray
(M47DG)

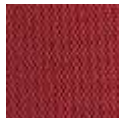


IR12 Light Gray
(M47LG)

Textile (Seat Pad)



EK13 Blue
(F44BU)



EK13 Red
(F44RD)



EK13 Dark Gray
(F44DG)



EK13 Light Gray
(F44LG)

STATEMENT OF LINE



Q4
Standard



Q4WA
Armless

CERTIFICATIONS

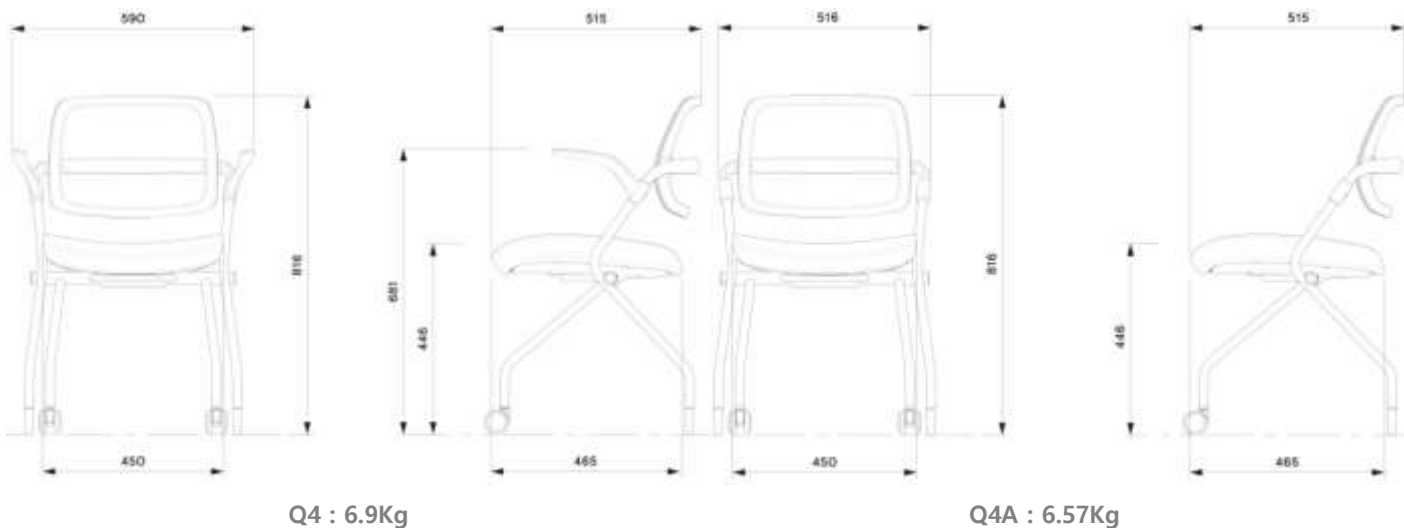
TB117-2013
ISO 14001 & 9001



SPECIFICATIONS

• Net Weight (mesh)	6.9kg (15.2 lbs)
• Body Shell	PA6
• Cushion Seats	Polyurethane fill
• Seat Pan Frame	PP
• Armrest	PA6
• Shell Bracket	PA6
• Frame	STEEL
• Casters Materials	PA6
• Carton Box Size	TBA
• Container Loading Plan	TBA

DIMENSIONS



DUOBACK CO.,LTD

HQ (Factory) : 27, Gajaeul-ro 32beongil, Seo-gu, Incheon, 22829, Korea.
Sales Office : #1002, 41, Digital-ro 31gil, Guro-gu, Seoul, 08375, Korea
T : +82-2-6204-2505 / F : +82-32-816-4817 / DUO1350@duoback.co.kr
www.DUOREST.com



Q L4



 DUOREST®

Arms

Comfort Stationary
Nylon Armrest

Back shell

Elasticity of the shell
itself providing a
comfortable sit in any
environment. Back pad
option available.

Foldable seat

Seat foldable for the
space efficiency.

Casters

Soft dual-wheel casters are
60mm O.D. for use on hard
floors. Only available in
Black and two-tone White.

Nesting Mechanism

Allows chairs to be nested together
and maximized for space saving.



FEATURES

- Multi-purpose chair
- Perfect for collaborative, meeting, conference and break space rooms or cafeterias
- Nesting Mechanism allows chairs to be nested together
- Comfort Stationary Nylon Armrest
- Foldable seat
- 60mm Hoodless Hard Floor Casters in Black and two-tone White
- Frame available in Black and White
- Optional backrest pad

STATEMENT OF LINE

COLORS

Textile



EK13 Blue
(F44BU)



EK13 Red
(F44RD)



EK13 Dark Gray
(F44DG)



EK13 Light Gray
(F44LG)



QL4
Standard



QL4WA
Armless

CERTIFICATIONS

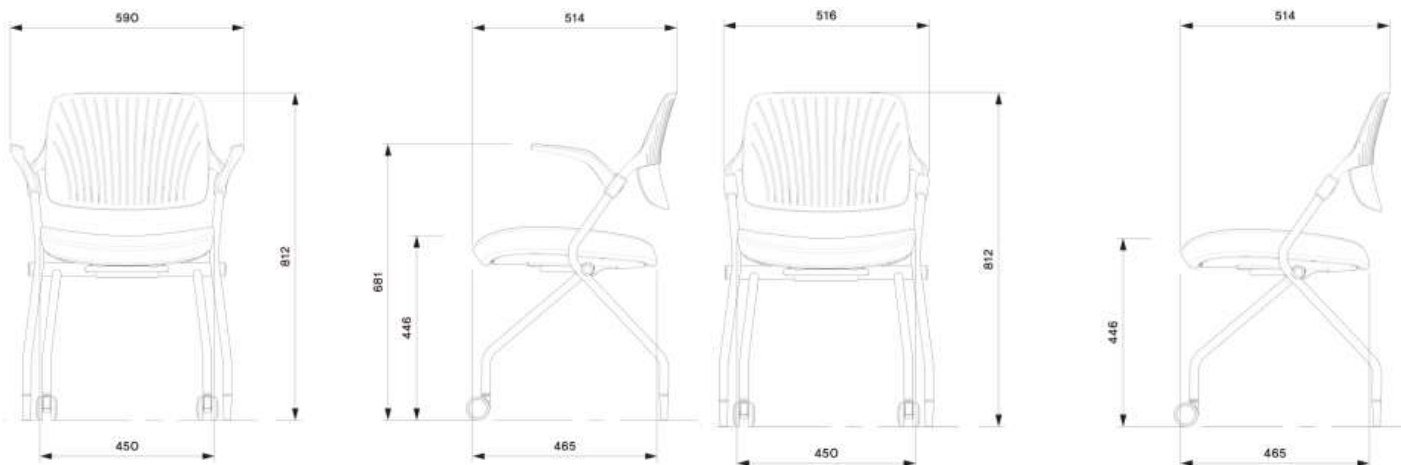
TB117-2013
ISO 14001 & 9001



SPECIFICATIONS

• Net Weight (mesh)	6.82kg (15.03 lbs)
• Body Shell	PA6
• Cushion Seats	Polyurethane fill
• Seat Pan Frame	PP
• Armrest	PA6
• Shell Bracket	PA6
• Frame	STEEL
• Casters Materials	PA6
• Carton Box Size	TBA
• Container Loading Plan	TBA

DIMENSIONS



QL4 : 6.82kg

QL4A : 6.5kg

DUOBACK CO.,LTD

HQ (Factory) : 27, Gajaeul-ro 32beongil, Seo-gu, Incheon, 22829, Korea.
 Sales Office : #1002, 41, Digital-ro 31gil, Guro-gu, Seoul, 08375, Korea
 T : +82-2-6204-2505 / F : +82-32-816-4817 / DUO1350@duoback.co.kr
www.DUOREST.com



booster



FEATURES

- Ergonomic DUOREST® System
- Multi-purpose seating
- Perfect for library, collaborative, meeting, training and break room spaces

SPECIFICATIONS

• Net Weight	12.1kg (26.7 lbs)
• Body Frame	STEEL
• Backrest Frame	PP and PA6
• Cushion Seats	Polyurethane fill
• Carton Box Size	700*640*690(mm)
• Container Loading Plan	20ft : 81 boxes //
	40ft : 162 boxes // 40H : 204 boxes

STATEMENT OF LINE



Standard
(BC-LC)



Mesh Seat
(BC-LMW)



Dual-Back
(BC-DSW)



Dual-Back with Mesh Seat
(BC-DM)

COLORS

BLACK FRAME

Mesh (Back)



ID81



ID81

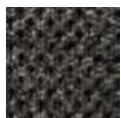
Square Blue Square Black

Mesh (Seat)



ID102
Black

Fabric (Back / Seat)



EK34
Black

WHITE FRAME

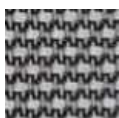


ID81

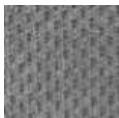


ID81

Square Red Square Gray

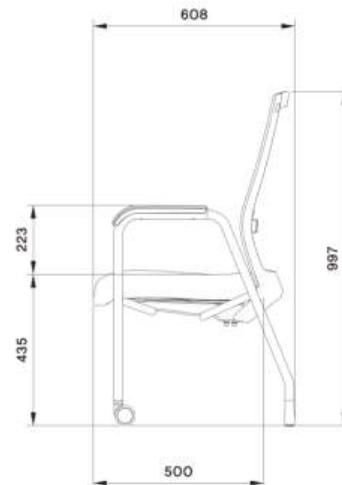


ID102
L.Gray



EK34
M.Gray

DIMENSIONS



CERTIFICATIONS

TB117-2013
ISO 14001 & 9001



DUOBACK CO.,LTD

HQ (Factory) : 27, Gajaeul-ro 32beongil, Seo-gu, Incheon, 22829, Korea.
Sales Office : #1002, 41, Digital-ro 31gil, Guro-gu, Seoul, 08375, Korea
T : +82-2-6204-2505 / F : +82-32-816-4817 / DUO1350@duoback.co.kr
www.DUOREST.com



milky



Adjustment Guide

 DUOREST®

FEATURES

- Ergonomic DUOREST® System
- Depth and Height Adjustable Backrest
- Comfort Stationary Armrest
- Optional 2-step Block footrest

SPECIFICATIONS

- Net Weight : 12.5kg (27.5 lbs)
- Body Frame : STEEL
- Backrest Frame : PA6
- Cushion Seats : Polyurethane fill
- Seat Pan Frame : PP
- Fixed Armrest : STEEL and PA6
- Base Materials : PA6
- Casters Materials : PA6 and PU
- Carton Box Size : 605*565*400 (mm)
- Container Loading Plan : 20ft : 123 boxes

// 40ft : 252 boxes // 40H : 304 boxes

COLORS

Syn. Leather



Mild Blue (2SEB3) Mild Green (2SEG1) Mild Lime (2SEL1) Mild Pink (2SEP2) Mild Coral (2SEC1)

STATEMENT OF LINE



Standard
(MI-218SF)



Non-swivel cylinder
(MI-218HSF)

DIMENSIONS



CERTIFICATIONS

ANSI/BIFMA X5.1-2017
ISO 14001 & 9001



DUOBACK CO.,LTD

HQ (Factory) : 27, Gajaeul-ro 32beongil, Seo-gu, Incheon, 22829, Korea.
Sales Office : #1002, 41, Digital-ro 31gil, Guro-gu, Seoul, 08375, Korea
T : +82-2-6204-2505 / F : +82-32-816-4817 / DUO1350@duoback.co.kr
www.DUOREST.com



rabbit



FEATURES

- Ergonomic DUOREST® System
- Depth and Height Adjustable Backrest
- Optional Mesh Seat
- Optional 2-step Block footrest

SPECIFICATIONS

- Net Weight : 10.4kg (22.9 lbs)
- Backrest Frame : PP
- Cushion Seats : Polyurethane fill
- Seat Pan Frame : PP
- Fixed Armrest : TPE
- Base Materials : PA6
- Casters Materials : PA6 and PU
- Carton Box Size : 670*430*640 (mm)
- Container Loading Plan : 20ft : 153 boxes
// 40ft : 324 boxes // 40H : 360 boxes

COLORS

Syn. Leather



Marine
Blue
(2SEB2)



Caramel
Brown
(2CBN1)



Bubble
Grey
(2SEY1)

Mesh (Seat)



Ash Mesh
Grey
(7AMG1)

STATEMENT OF LINE



Standard
(RA-070LSF)

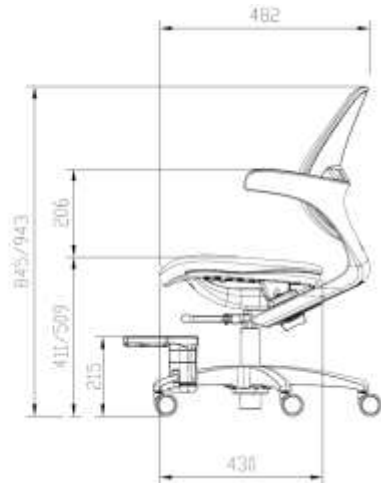
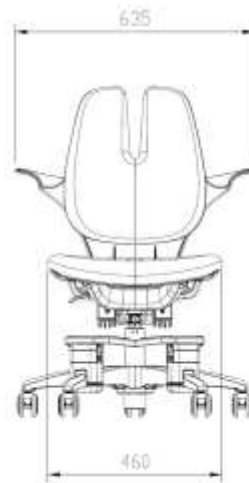


Non-swivel cylinder
(RA-070LSHF)



Mesh Seat
(RA-070M)

DIMENSIONS



CERTIFICATIONS

ANSI/BIFMA X5.1-2017
ISO 14001 & 9001



DUOBACK CO.,LTD

HQ (Factory) : 27, Gajaeul-ro 32beongil, Seo-gu, Incheon, 22829, Korea.
Sales Office : #1002, 41, Digital-ro 31gil, Guro-gu, Seoul, 08375, Korea
T : +82-2-6204-2505 / F : +82-32-816-4817 / DUO1350@duoback.co.kr
www.DUOREST.com



FOLDING



FEATURES

- Ergonomic DUOREST® System
- Easy Moving Grip
- Foldable Frame

STATEMENT OF LINE



Dual-back
(D922)



Single Back
(D910)

SPECIFICATIONS

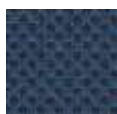
• Net Weight (Dual-back / Single Back)	4.5kg (9.9 lbs) / 3.5kg (7.7 lbs)
• Frame	STEEL
• Cushion Seat	Polyurethane fill
• Seat Pan Frame	PP / PU
• Carton Box Size	490*235*570 (mm)
• Container Loading Plan	20ft : 412 boxes // 40ft : 860 boxes // 40H : 936 boxes

COLORS

Dual-back (Fabric)



Raschel Red
(F34RD)



Raschel Blue
(F34BU)



Raschel Grey
(F34GY)

Single Back (Fabric)

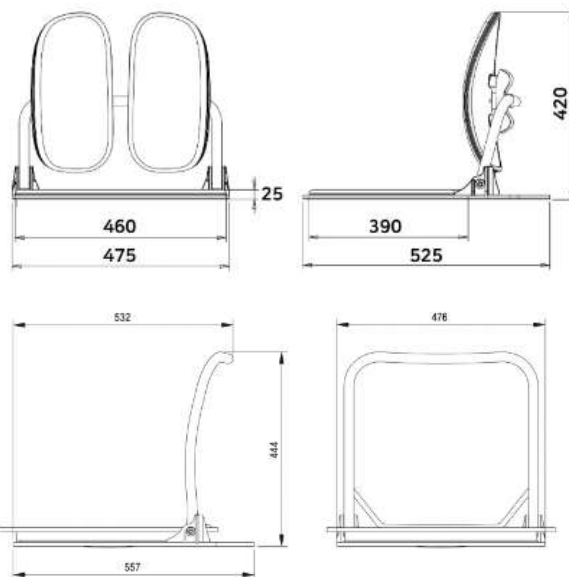


Beige
(X99BI)



Gray
(X99GY)

DIMENSIONS



CERTIFICATIONS

ANSI/BIFMA X5.1-2017
ISO 14001 & 9001



DUOBACK CO.,LTD

HQ (Factory) : 27, Gajaeul-ro 32beongil, Seo-gu, Incheon, 22829, Korea.
Sales Office : #1002, 41, Digital-ro 31gil, Guro-gu, Seoul, 08375, Korea
T : +82-2-6204-2584 / F : +82-32-816-4817 / DUO1350@duoback.co.kr
www.DUOREST.com

